



We specialize in Birdseye Maple, Figured Maple, and Plain Maple: Tonewoods and Veneers.

Yankee Veneer Corp. was incorporated in 1994. Our beginnings go back to 1975 when our founder took a summer job with a European cabinetmaker. Here, he was exposed to beautiful workmanship and beautiful woods, especially Birdseye Maple.

He started his own company in 1977. His interest in Birdseye Maple and Curly Maple soon lead him to the custom guitar builders which prefer these woods.

Today, Yankee Veneer Corp. produces the world's finest Birdseye Maple, and Curly Maple, Tonewoods, Lumber and Veneer. We supply every market using these woods. Our pattern shop produces thousands of pre-dimensioned parts for the top builders of guitars, jets, yachts, automobiles, billiard cues & gunstocks. We supply lumber to cabinetmakers and furnituremakers.

Parts of this CD are Reproduced with the Permission of the Rights Holder.



Toll free: 877-355-8957 • Email: info@birdseyemaple.com • www.BirdsEyeMaple.com

INTRODUCTION

INDEX

This CD is designed to give you the opportunity to view and learn about the veneers that are the staple of decorative veneers.

Most pages have an INDEX button in the upper left which will return you to this page.

Burls



Crotches



**Light
Veneers**



**Medium
Veneers**



**Dark
Veneers**



Toll free: 877-355-8957 • Email: info@birdseyemaple.com • www.BirdsEyeMaple.com

INDEX	Burls	Crotches	Light Veneers	Medium Veneers	Dark Veneers
-------	-------	----------	---------------	----------------	--------------

Amboyna Burl

Laurel Burl

Plane Tree Burl

Birch Burl

Madrona Burl

Redwood Burl

Camphor Burl

Maple Burl

Vavona Burl

Carpathian Elm Burl

Maple Burl Cluster

Walnut Burl

Chestnut Burl

Mappa Burl

Walnut burl (European)

Elm Burl

Myrtle Burl

White Ash Burl

Eucalyptus Burl

Oak Burl

Yew Tree Burl

Imbuia Burl

Oak Burl (English brown)

Karelian Burl

Olive Ash Burl



Toll free: 877-355-8957 • Email: info@birdseyemaple.com • www.BirdsEyeMaple.com

INDEX

Burls

Crotches

Light Veneers

Medium Veneers

Dark Veneers

Etimoe Crotch

Mahogany Crotch

Walnut Crotch



The heart pattern in all crotch logs evolve through the sequence. The photos to the left show a typical pattern change through a single sequence. Comparing one photo to the next represents a change of 24 leaves in the sequence.

INDEX	Burls	Crotches	Light Veneers	Medium Veneers	Dark Veneers
-------	-------	----------	------------------	-------------------	-----------------

Anigre

Birdseye

Maple, Quilted

Ash

Cerejeira

Movingue

Ash, Japanese

Chen



Oak, White

Ash, Tamo

Elm

Plane

Aspen

Maple

Sassafras

Avodire

Maple, Curly

Satinwood

Beech

Maple, Wormy

Sen

Birch, White

Maple, Birdseye

Sycamore



Toll free: 877-355-8957 • Email: info@birdseyemaple.com • www.BirdsEyeMaple.com

INDEX	Burls	Crotches	Light Veneers	Medium Veneers	Dark Veneers
-------	-------	----------	---------------	----------------	--------------

Afromosia

Hickory

Paldao

Andiroba

Koa

Pearwood

Bosse

Lacewood

Primavera

Cedar (Spanish)

Limba

Red Gum

Cherry

Mahogany

Teak

Eucalyptus

Nyatoh

Timborana

Eucalyptus (Pommele)

Oak, Red

Tineo

Frake

Okoume

Walnut, (Italian)

Gaboon

Olive Ash

Zebrawood



INDEX	Burls	Crotches	Light Veneers	Medium Veneers	Dark Veneers
Bubinga		Makore		Santos	
Ebony		Makore (Pommele)		Sapele	
Etimoe		Mozambique		Sapele (Pommele)	
Imbuia		Oak (Bog)		Walnut (American Black)	
Ipe		Oak (Smoked)		Walnut (Australian)	
Jarrah		Ovangkol		Walnut (Claro)	
Kosipo		Padauk		Walnut (European)	
Laurel (East Indian)		Rosewood (Brazilian)		Wenge	
Louro Preto		Rosewood (Santos)		Ziricote	



INDEX
BURLS

MAPPA BURL

Information



Toll free: 877-355-8957 • Email: info@birdseyemaple.com • www.BirdsEyeMaple.com

INDEX
BURLS

MAPPA BURL

BACK



ORIGIN – Europe

OTHER NAMES – Burl from European black poplar

COMMENTS - Mappa burl ranges in color from pink to yellow. Cluster burls are more common with grain and figure between the burls. This veneer often has knots and holes that require plugging or filling.



Toll free: 877-355-8957 • Email: info@birdseyemaple.com • www.BirdsEyeMaple.com

INDEX
BURLS

MAPLE BURL CLUSTER

Information

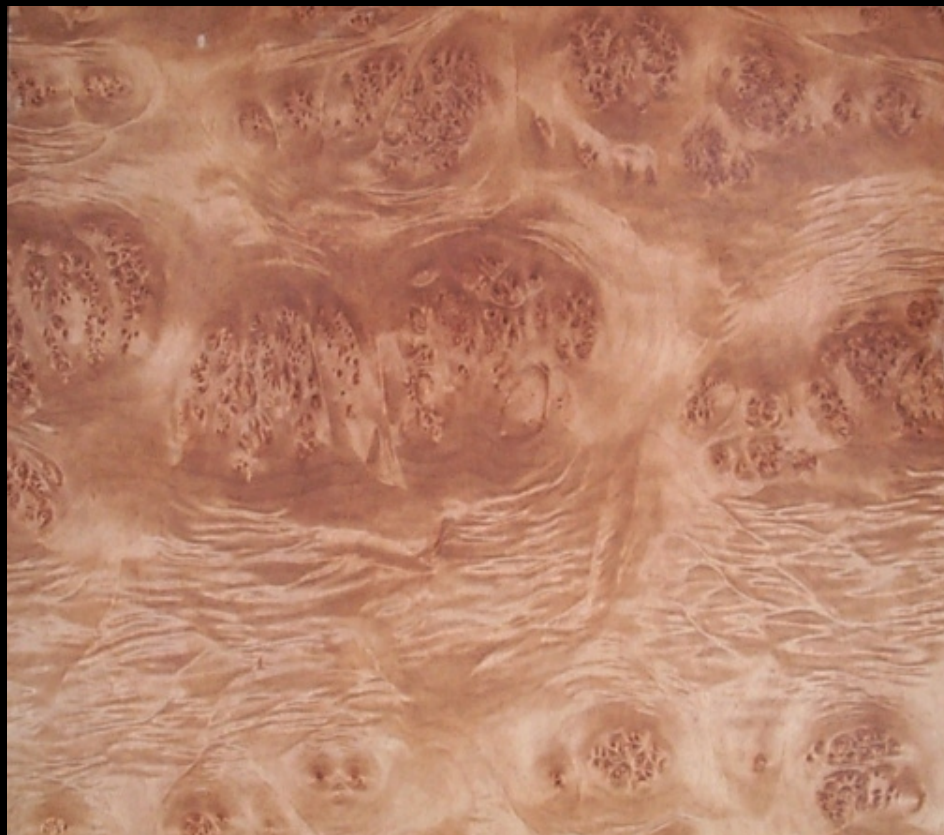


Toll free: 877-355-8957 • Email: info@birdseyemaple.com • www.BirdsEyeMaple.com

INDEX
BURLS

MAPLE BURL CLUSTER

BACK



ORIGIN – Western United States

COMMENTS – Maple burl Cluster logs can be large with large dimension leaves. Clusters are surrounded by grain or muscle. Color will range from white into pink tones. Patterns will evolve fairly quickly through the sequence.



Toll free: 877-355-8957 • Email: info@birdseyemaple.com • www.BirdsEyeMaple.com

INDEX BURLS

MAPLE BURL

Information



Toll free: 877-355-8957 • Email: info@birdseyemaple.com • www.BirdsEyeMaple.com

INDEX
BURLS

MAPLE BURL

BACK



ORIGIN – Western United States

AVAILABILITY – Rare.

COMMENTS – Most maple burls are small and of poor quality. Bark pockets are a common defect (upper right and left). Color will range from light pink into darker rose tones. Occasionally, good large logs with good dimension, sequence, and minimal bark pockets become available on the market. These logs are very expensive.



Toll free: 877-355-8957 • Email: info@birdseyemaple.com • www.BirdsEyeMaple.com

INDEX
BURLS

PLANE TREE BURL

Information



Toll free: 877-355-8957 • Email: info@birdseyemaple.com • www.BirdsEyeMaple.com

INDEX
BURLS

PLANE TREE BURL

BACK



ORIGIN – Europe

AVAILABILITY – Limited.

COMMENTS – Plane tree burls can be large and have good sequence. Color variation across each leaf and through the sequence is common. Burl patterns are usually very tight with some grain.



Toll free: 877-355-8957 • Email: info@birdseyemaple.com • www.BirdsEyeMaple.com

INDEX
BURLS

YEW TREE BURL

Information



Toll free: 877-355-8957 • Email: info@birdseyemaple.com • www.BirdsEyeMaple.com

INDEX
BURLS

YEW TREE BURL

BACK



ORIGIN – Europe

AVAILABILITY – Rare.

COMMENTS – Yew tree burl is commonly called simply English yew. Logs are very small and have limited sequence. The veneer is highly prized and very expensive.



Toll free: 877-355-8957 • Email: info@birdseyemaple.com • www.BirdsEyeMaple.com

INDEX
BURLS

CHESTNUT BURL

Information



Toll free: 877-355-8957 • Email: info@birdseyemaple.com • www.BirdsEyeMaple.com

INDEX
BURLS

CHESTNUT BURL

BACK



ORIGIN – Europe

AVAILABILITY – Limited.

COMMENTS – Chestnut burl is similar to European oak burl. Color can range between logs from pink to yellow and tan tones. The veneer usually has grain, muscle, and burl combined in pleasing patterns. Bark pockets are common character marks.



Toll free: 877-355-8957 • Email: info@birdseyemaple.com • www.BirdsEyeMaple.com

INDEX
BURLS

WHITE ASH BURL

Information



Toll free: 877-355-8957 • Email: info@birdseyemaple.com • www.BirdsEyeMaple.com

INDEX
BURLS

WHITE ASH BURL

BACK



ORIGIN – Europe

AVAILABILITY – Limited. Call Yankee Veneers

COMMENTS – Large nice white ash burls are still fairly common in today's market. Leaf dimension can be large with good sequences. Most logs display burl patterns with up to 80% swirling grain similar to the picture on the right.



Toll free: 877-355-8957 • Email: info@birdseyemaple.com • www.BirdsEyeMaple.com

INDEX
BURLS

OLIVE ASH BURL

Information



Toll free: 877-355-8957 • Email: info@birdseyemaple.com • www.BirdsEyeMaple.com

INDEX
BURLS

OLIVE ASH BURL

BACK



ORIGIN – Europe

AVAILABILITY – Rare. Call Yankee Veneers

COMMENTS – Large olive ash burl in high quality and sequence are not common. Knots and cracks are common defects in this species. Pattern evolve very quickly and “evil faces” are commonly perceived in book matched panels.



Toll free: 877-355-8957 • Email: info@birdseyemaple.com • www.BirdsEyeMaple.com

INDEX
BURLS

AMBOYNA BURL

Information



Toll free: 877-355-8957 • Email: info@birdseyemaple.com • www.BirdsEyeMaple.com

INDEX
BURLS

AMBOYNA BURL

BACK



ORIGIN – Asia

AVAILABILITY – Limited.

COMMENTS – Amboyna burl is one of the most prized veneers available. Unfortunately, veneer costs are extreme. Color can range from yellow tones into dark orange tones. Some redwood burls can be used to substitute for this special veneer.

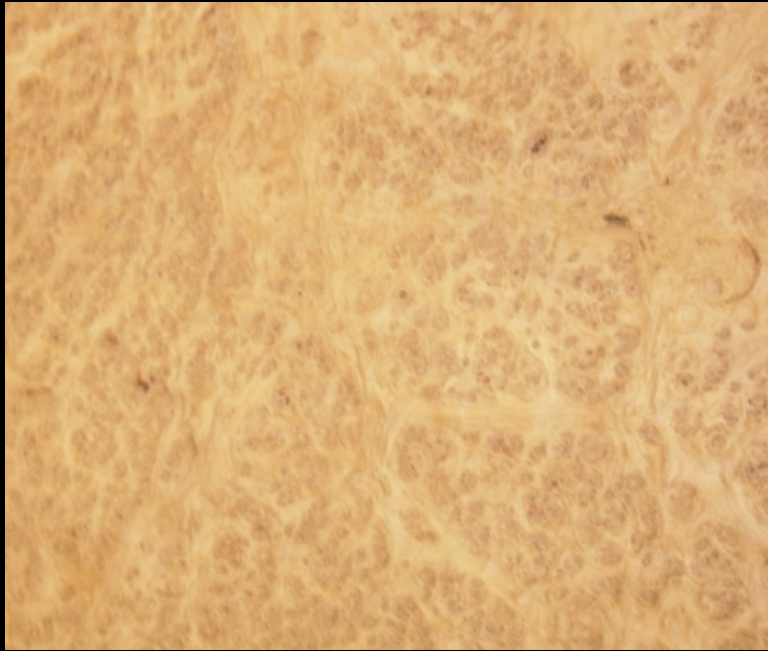


Toll free: 877-355-8957 • Email: info@birdseyemaple.com • www.BirdsEyeMaple.com

INDEX
BURLS

OAK BURL

Information

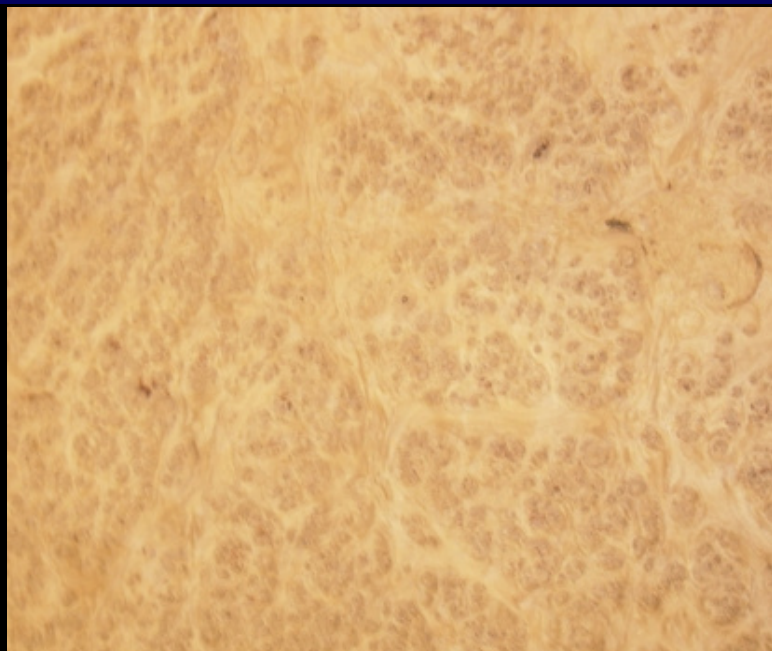


Toll free: 877-355-8957 • Email: info@birdseyemaple.com • www.BirdsEyeMaple.com

INDEX
BURLS

OAK BURL

BACK



ORIGIN – Europe

AVAILABILITY – Limited.

COMMENTS – Oak burl color ranges from tan into yellow tones. Bark pockets, cracks, and knots are common defects in this veneer species. Most logs will have some cluster sections (right photo) evolving toward full burl (left photo).



Toll free: 877-355-8957 • Email: info@birdseyemaple.com • www.BirdsEyeMaple.com

INDEX
BURLS

MYRTLE BURL

Information



fo@birdseyemaple.com • www.BirdsEyeMaple.com

INDEX
BURLS

MYRTLE BURL

BACK



ORIGIN – North America

AVAILABILITY – Limited.

COMMENTS – Similar in color and pattern to laurel burl. Most logs are small and not consistent in pattern.

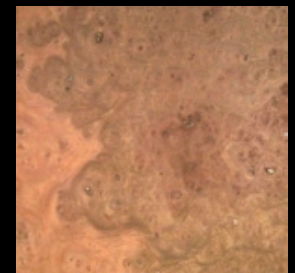


Toll free: 877-355-8957 • Email: info@birdseyemaple.com • www.BirdsEyeMaple.com

INDEX BURLS

ELM BURL (Carpathian Elm Burl)

Information



Toll free: 877-555-8957 • Email: info@birdseyemaple.com • www.BirdsEyeMaple.com

INDEX
BURLS

ELM BURL (Carpathian Elm Burl)

BACK



ORIGIN – Europe

AVAILABILITY – Limited.

COMMENTS – Large elm burl logs are available but demand a very high price. Colors range from light greenish tan to rich chestnut brown. Bark pockets and green stain are common defects. Most logs have some variation of color across the leaves suggesting a two toned appearance. Mineral specs in the grain are common (bottom right).

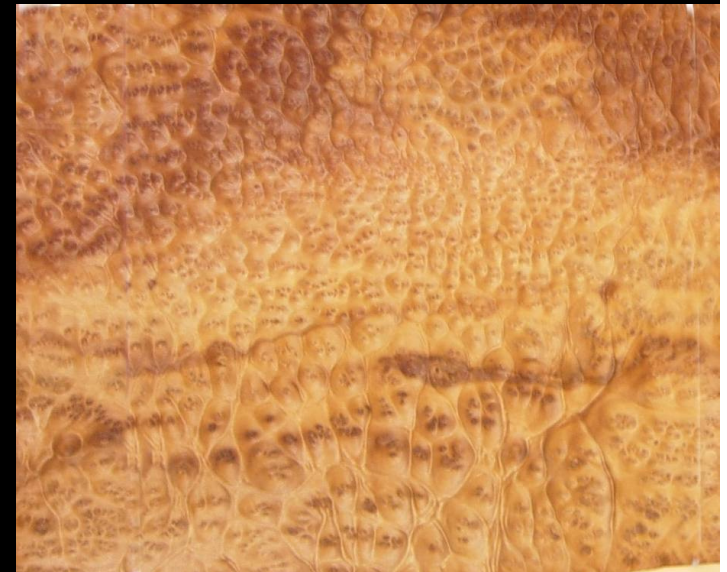
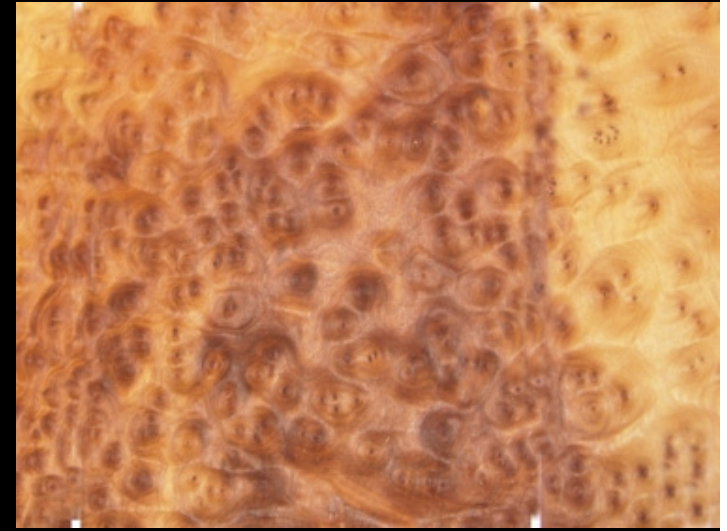
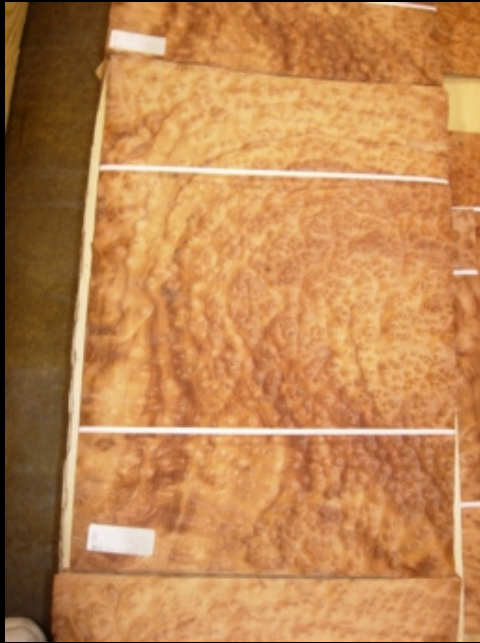


Toll free: 877-355-8957 • Email: info@birdseyemaple.com • www.BirdsEyeMaple.com

INDEX
BURLS

CAMPHOR BURL

Information

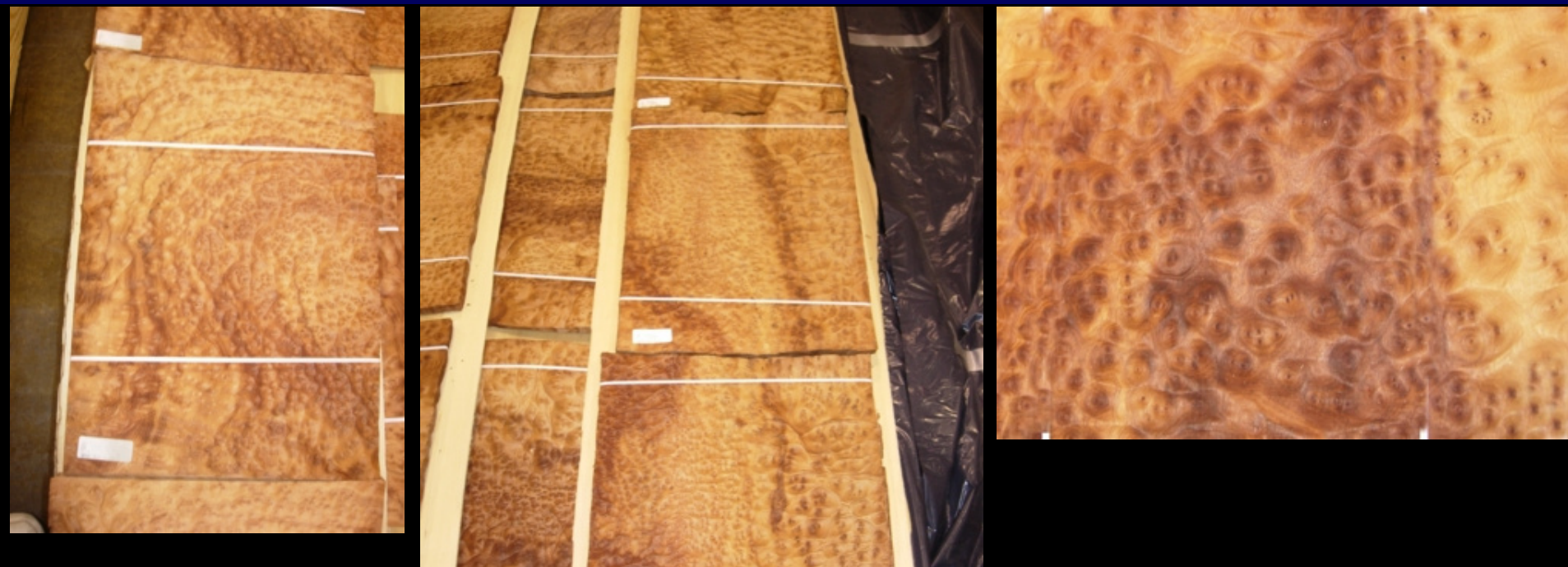


Toll free: 877-355-8957 • Email: info@birdseyemaple.com • www.BirdsEyeMaple.com

INDEX
BURLS

CAMPHOR BURL

BACK



ORIGIN – Asia

AVAILABILITY – Limited.

COMMENTS – Camphor burls are small burls that might be useable for small planes. There is a wide range of pattern and character between logs so combining logs is difficult. There is color range in the veneer leaves and through the sequences. These pictures represent the highest possible grade in this species.



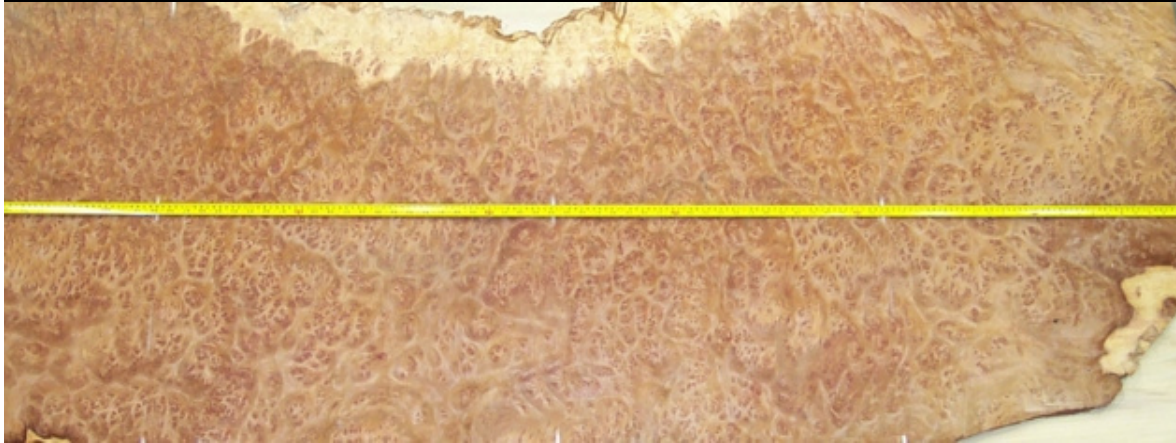
Toll free: 877-355-8957 • Email: info@birdseyemaple.com • www.BirdsEyeMaple.com

INDEX
BURLS

REDWOOD BURL

(Vavona Burl)

Information



Toll free: 877-355-8957 • Email: info@birdseyemaple.com • www.BirdsEyeMaple.com

INDEX
BURLS

REDWOOD BURL

(Vavona Burl)

BACK



ORIGIN – Western North America

AVAILABILITY – Usually available.

OTHER NAMES – Vavona burl in Europe

COMMENTS – Redwood burl can be big and of high quality. There is considerable range of color and pattern as illustrated by these pictures of CFB logs. Colors will range from deep rose tones to yellow. Some range of color across the leaves is common.



Toll free: 877-355-8957 • Email: info@birdseyemaple.com • www.BirdsEyeMaple.com

INDEX BURLS

WALNUT BURL (European)

Information



Toll free: 877-355-8957 • Email: info@birdseyemaple.com • www.BirdsEyeMaple.com

INDEX
BURLS

WALNUT BURL (European)

BACK



ORIGIN – Eastern Europe

AVAILABILITY – Limited.

COMMENTS – European walnut burl is generally lighter in color compared to domestic walnut burl. Colors range from grey to light brown tones. Some logs have strong contrast or marble patterns. Clusters with sap is common. Big logs with good dimension and sequence occasionally become available on the market at premium price.

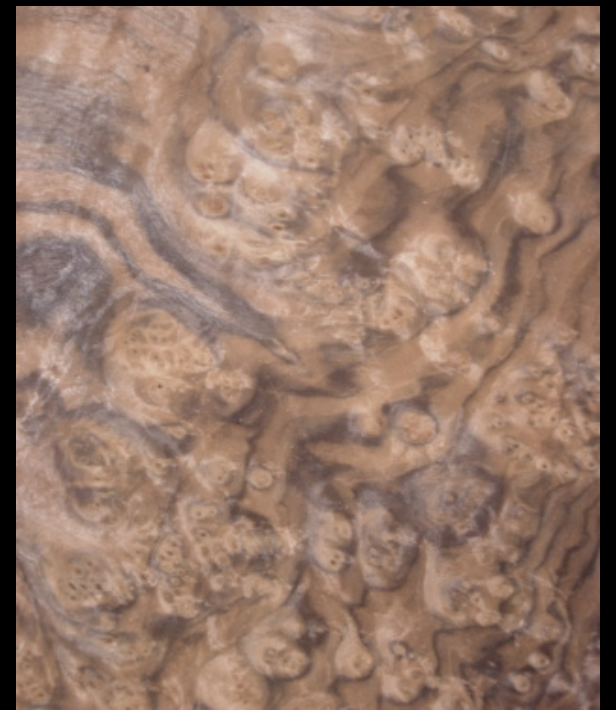


Toll free: 877-355-8957 • Email: info@birdseyemaple.com • www.BirdsEyeMaple.com

INDEX BURLS

WALNUT BURL

Information



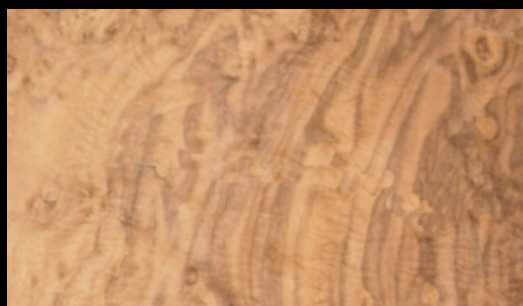
YANKEE
VENEER CORP.

-8957 • Email: info@birdseyemaple.com • www.BirdsEyeMaple.com

INDEX
BURLS

WALNUT BURL

BACK



ORIGIN – Western North America (California)

AVAILABILITY – Available.

COMMENTS – Walnut burl from North America is one of the more available burls today. Patterns range from full burl (upper right) to burl swirl cluster (lower left). Colors range from light brown to dark rose tones. Price can range from moderately expensive for clusters to premium pricing for big full burls.

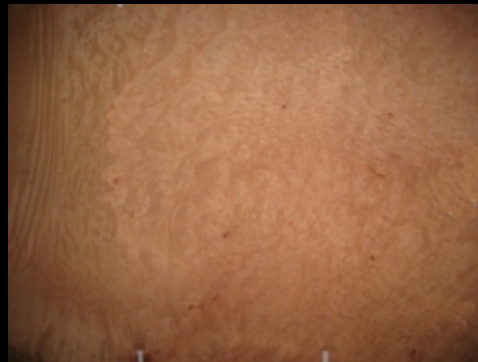
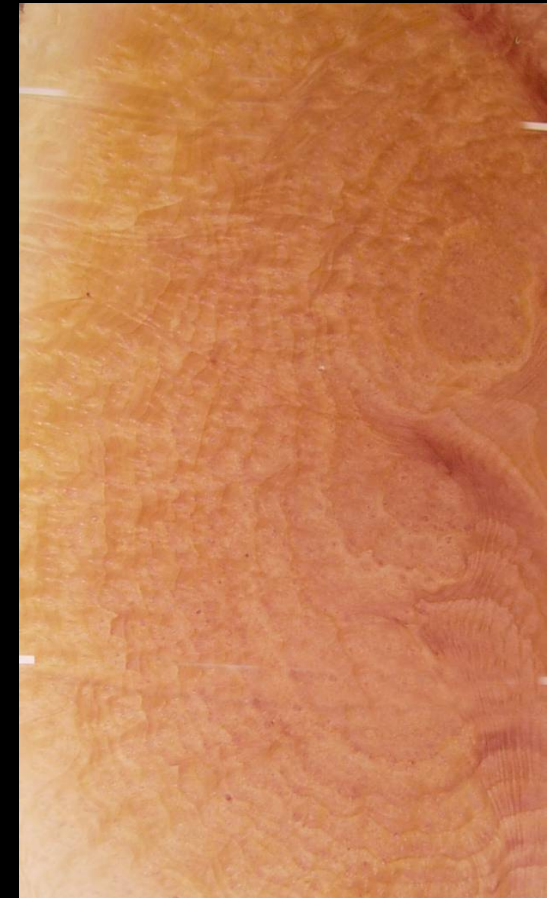
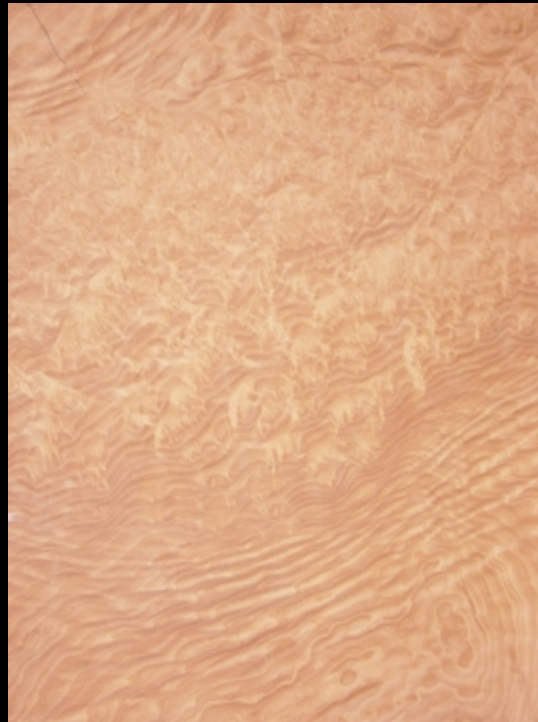
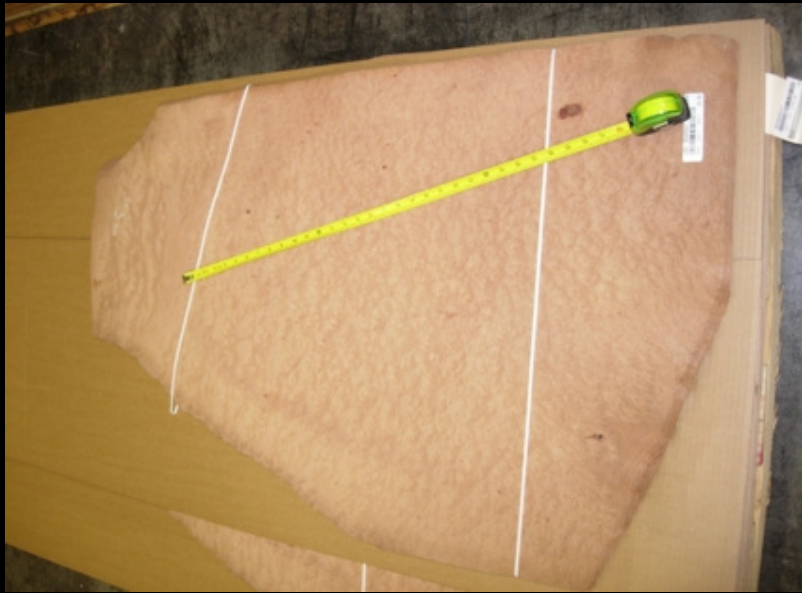


Toll free: 877-355-8957 • Email: info@birdseyemaple.com • www.BirdsEyeMaple.com

INDEX
BURLS

MADRONA BURL

Information

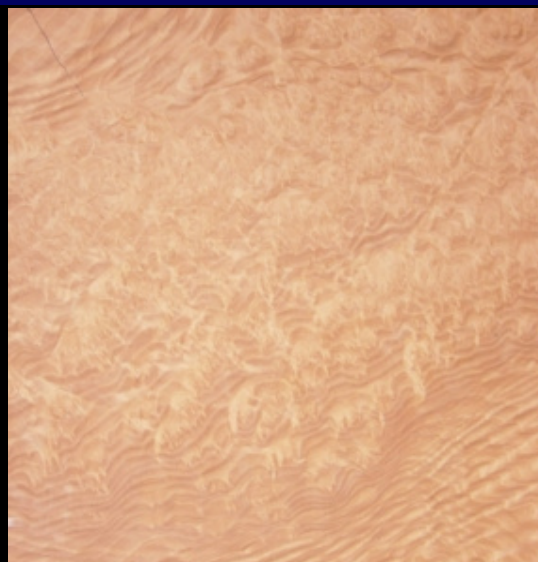


Toll free: 877-355-8957 • Email: info@birdseyemaple.com • www.BirdsEyeMaple.com

INDEX
BURLS

MADRONA BURL

BACK



ORIGIN – Western North America

AVAILABILITY – Limited.

COMMENTS –Madrona burls are light in color ranging from tan into pink or rose tones. Most natural logs will have some range of color across the sheets. Unfortunately, many large log have a blue stain defects which affects yield. Many big logs with major discoloration issues are bleached and dyed to a uniform pink color (upper left). Bark pockets are a common defect. Many burls have burl with figure or muscle (upper center).



Toll free: 877-355-8957 • Email: info@birdseyemaple.com • www.BirdsEyeMaple.com

INDEX BURLS

OAK BURL (English brown)

Information



Toll free: 877-355-8957 • Email: info@birdseyemaple.com • www.BirdsEyeMaple.com

INDEX
BURLS

OAK BURL

(English brown)

BACK



ORIGIN – Europe (England)

AVAILABILITY – Rare.

COMMENTS – English brown oak burls are usually small with limited sequence. Burls will typically have full burl and cluster in the same sequence. Strong brittle grain is common.



Toll free: 877-355-8957 • Email: info@birdseyemaple.com • www.BirdsEyeMaple.com

INDEX
BURLS

IMBUIA BURL

Information



Toll free: 877-355-8957 • Email: info@birdseyemaple.com • www.BirdsEyeMaple.com

INDEX
BURLS

IMBUIA BURL

BACK



ORIGIN – South America

AVAILABILITY – Limited.

COMMENTS – True imbuia burls are extremely rare but often pommele imbuia with tight pommele figure is called imbuia burl. Color will range from yellow to dark brown. Uniform color across the leaf is uncommon.



Toll free: 877-355-8957 • Email: info@birdseyemaple.com • www.BirdsEyeMaple.com

INDEX
BURLS

LAUREL BURL

Information



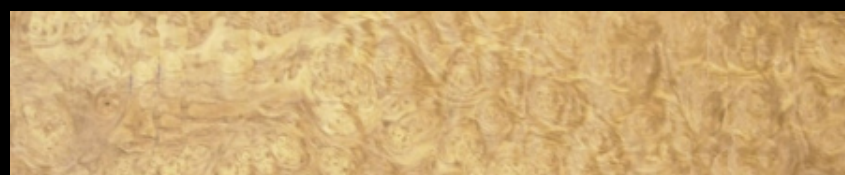
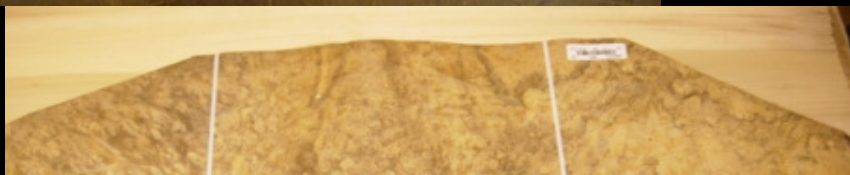
 **YANKEE**
VENEER CORP.

Toll free: 877-355-8957 • Email: info@birdseyemaple.com • www.BirdsEyeMaple.com

INDEX
BURLS

LAUREL BURL

BACK



ORIGIN – South America

AVAILABILITY – Limited.

COMMENTS – Laurel burls come from Chile and similar environments in South America. Patterns will range from uniform yellow (top center) to wild marbled yellow – brown swirls (top left). Patterns commonly evolve through sequences. Two tone bundles are common (top right).



Toll free: 877-355-8957 • Email: info@birdseyemaple.com • www.BirdsEyeMaple.com

INDEX BURLS

BIRCH BURL (Karelian Birch Burl)

Information



Toll free: 877-355-8957 • Email: info@birdseyemaple.com • www.BirdsEyeMaple.com

INDEX
BURLS

BIRCH BURL

(Karelian Birch Burl)

BACK



ORIGIN – Northern Europe

AVAILABILITY – Limited.

COMMENTS – Most Karelian birch burl logs are cut 4 feet long or less and produce a few bundles in sequence. Full length logs (8' or greater) are very rare. Typically, suppliers will put several logs together with similar character and color and call it “one log”. Consistency and sequence are always limited.



Toll free: 877-355-8957 • Email: info@birdseyemaple.com • www.BirdsEyeMaple.com

INDEX
CROTCHES

CROTCH MAHOGANY

Information



Toll free: 877-355-8957 • Email: info@birdseyemaple.com • www.BirdsEyeMaple.com

INDEX
CROTCHES

CROTCH MAHOGANY

BACK



ORIGIN – Africa and South America

AVAILABILITY – Available.

COMMENTS – Crotch veneer is sliced from a major branch in a tree. Crotch mahogany is by far the most common veneer with this pattern. Most logs evolve the heart pattern through the sequence (top center to top right is typical).



Toll free: 877-355-8957 • Email: info@birdseyemaple.com • www.BirdsEyeMaple.com

INDEX
CROTCHES

CROTCH ETIMOEO

Information



Toll free: 877-355-8957 • Email: info@birdseyemaple.com • www.BirdsEyeMaple.com

INDEX
CROTCHES

CROTCH ETIMOEO

BACK



ORIGIN – Africa

AVAILABILITY – Rare.

COMMENTS – Crotch veneer is sliced from a major branch in a tree. I have only seen one good crotch etimoEO log in ten years! This log had limited sequence and rapid evolution of pattern in the run.



Toll free: 877-355-8957 • Email: info@birdseyemaple.com • www.BirdsEyeMaple.com

INDEX
CROTCHES

CROTCH WALNUT

Information



Toll free: 877-355-8957 • Email: info@birdseyemaple.com • www.BirdsEyeMaple.com

INDEX
CROTCHES

CROTCH WALNUT

BACK



ORIGIN – North America

AVAILABILITY – Limited.

COMMENTS – Crotch walnut are always small sequence with a few quality bundles.



Toll free: 877-355-8957 • Email: info@birdseyemaple.com • www.BirdsEyeMaple.com

INDEX
LIGHT VENEER

SYCAMORE

Information



Toll free: 877-355-8957 • Email: info@birdseyemaple.com • www.BirdsEyeMaple.com

INDEX
LIGHT VENEER

SYCAMORE

BACK



ORIGIN – Europe e most prized cut of the species. Sycamore (harewood) will range in color from near white to light pinks and yellows. Most veneer will have some pin knots and minor flares. Similar to North American hard maple without sugar streaks. The “cat’s paw” pattern (upper right) is rare.



Toll free: 877-355-8957 • Email: info@birdseyemaple.com • www.BirdsEyeMaple.com

INDEX
LIGHT VENEER

MAPLE

Information



Toll free: 877-355-8957 • Email: info@birdseyemaple.com • www.BirdsEyeMaple.com

INDEX
LIGHT VENEER

MAPLE

BACK



ORIGIN – Eastern North America

AVAILABILITY – Available.

COMMON PATTERNS – Flat cut and quarter cut

COMMENTS – All hard maple will range in color from near white to pink and yellow tones. Veneer from this species usually has hard grain lines, sugar streaks, pins, and flares. Defect free logs are rare.



Toll free: 877-355-8957 • Email: info@birdseyemaple.com • www.BirdsEyeMaple.com

INDEX LIGHT VENEER

Maple (Wormy)

Information



Toll free: 877-355-8957 • Email: info@birdseyemaple.com • www.BirdsEyeMaple.com

INDEX
LIGHT VENEER

Maple
(Wormy)

BACK



ORIGIN – Eastern North America

AVAILABILITY – Limited.

COMMON PATTERNS – Flat cut or rotary sliced

COMMENTS – This pattern is common in silver maple logged in forests of eastern United States. The unusual pattern is the residue stain left from burrowing worms in the living tree.



Toll free: 877-355-8957 • Email: info@birdseyemaple.com • www.BirdsEyeMaple.com

INDEX
LIGHT VENEER

Maple
(Quilted)

Information



Toll free: 877-355-8957 • Email: info@birdseyemaple.com • www.BirdsEyeMaple.com

INDEX LIGHT VENEER

Maple (Quilted)

BACK

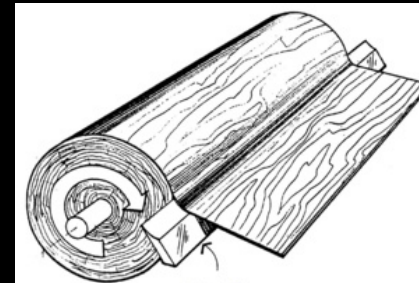


ORIGIN – Western North America

AVAILABILITY – Rare.

COMMON PATTERNS – Rotary sliced

COMMENTS – This pattern is found in west coast or big leaf maple of NW United States or Canada. Big logs are extremely rare especially logs that are free of defects. Colors will range from near white to yellow or pink. Color variation across the leaves should be expected.



Toll free: 877-355-8957 • Email: info@birdseyemaple.com • www.BirdsEyeMaple.com

INDEX
LIGHT VENEER

Maple
(Curly)

Information



Toll free: 877-355-8957 • Email: info@birdseyemaple.com • www.BirdsEyeMaple.com

INDEX
LIGHT VENEER

Maple
(Curly)

BACK

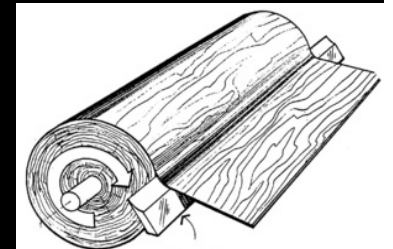


ORIGIN –Eastern North America

AVAILABILITY – Rare.

COMMON PATTERNS – Rotary sliced

COMMENTS – Curly maple pattern comes from the hard maple species logged in North Eastern United States or Canada. Curly logs are usually small and often have dark streak defects (left photo). Big logs are rare.

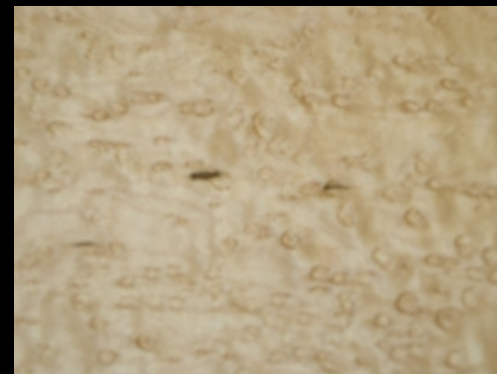


Toll free: 877-355-8957 • Email: info@birdseyemaple.com • www.BirdsEyeMaple.com

INDEX LIGHT VENEER

Maple (Birdseye)

Information

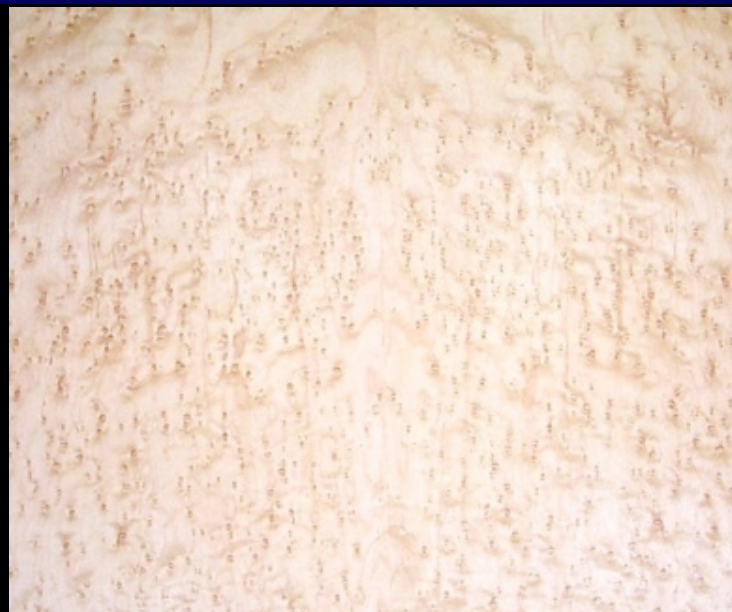


Toll free: 877-355-8957 • Email: info@birdseyemaple.com • www.BirdsEyeMaple.com

INDEX LIGHT VENEER

Maple (Birdseye)

BACK

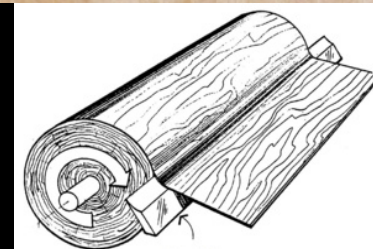


ORIGIN – North Eastern North America and South Eastern Canada

AVAILABILITY – Available.

COMMON PATTERNS – Rotary sliced

COMMENTS – Birdseye maple is one of the most used veneers. Every log will differ slightly in color, grain, eye size, density, and background figure. Most logs are small but Logs with compatible character are often combined to complete larger applications. The most common defects are sugar streaks and knots (lower right photos).



INDEX
LIGHT VENEER

ASPEN

Information



Toll free: 877-355-8957 • Email: info@birdseyemaple.com • www.BirdsEyeMaple.com

INDEX
LIGHT VENEER

ASPEN

BACK



ORIGIN – Europe

AVAILABILITY – Limited.

COMMON PATTERNS – Quartered, quarter figured and flat cut

COMMENTS – European aspen is similar to grissard, or willow and is characterized by soft pink or yellow colors, some variation in color across the leaves, and smooth patina. Veneer leaves will be narrow and sequences will be small.



Toll free: 877-355-8957 • Email: info@birdseyemaple.com • www.BirdsEyeMaple.com

INDEX
LIGHT VENEER

BIRCH

Information



Toll free: 877-355-8957 • Email: info@birdseyemaple.com • www.BirdsEyeMaple.com

INDEX
LIGHT VENEER

BIRCH

BACK



ORIGIN – North America

AVAILABILITY – Limited.

COMMON PATTERNS – Flat cut and quartered.

COMMENTS – This veneer is usually light pink to yellow in color and is often called red birch although the species is white birch. Strong grain in common and some logs will have spectacular figure patterns. This veneer is usually free of major defects and sequences are good.

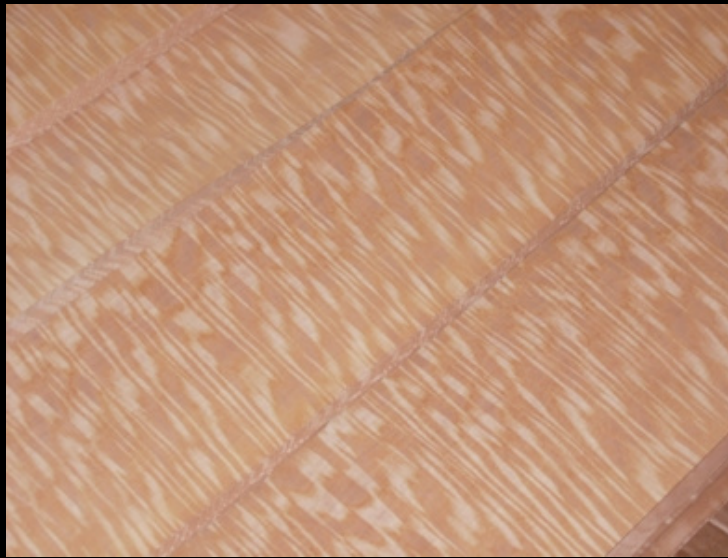


Toll free: 877-355-8957 • Email: info@birdseyemaple.com • www.BirdsEyeMaple.com

INDEX
LIGHT VENEER

ANIGRE

Information



Toll free: 877-355-8957 • Email: info@birdseyemaple.com • www.BirdsEyeMaple.com

INDEX
LIGHT VENEER

ANIGRE

BACK



ORIGIN – Africa

AVAILABILITY – Available.

COMMON PATTERNS – Flat cut and quartered.

COMMENTS – Anigre (Anegre) is most commonly sliced as quarters rather than flatcut. Color will range from yellow to tan or pink. Figured logs are most valuable. Fiddle back (lower right), block mottle (upper right), and fiddle mottle (upper center) are common figures. Non figured logs may also be available.



Toll free: 877-355-8957 • Email: info@birdseyemaple.com • www.BirdsEyeMaple.com

INDEX LIGHT VENEER

BEECH

Information



Toll free: 877-355-8957 • Email: info@birdseyemaple.com • www.BirdsEyeMaple.com

INDEX
LIGHT VENEER

BEECH

BACK



ORIGIN – Europe

AVAILABILITY – Available.

COMMON PATTERNS – Flat cut

COMMENTS – European beech are most often sliced as flat cut with soft grain lines and uniform color. The uniform pink color is created by a process called steaming. Occasionally, figured logs (upper right) become available.



Toll free: 877-355-8957 • Email: info@birdseyemaple.com • www.BirdsEyeMaple.com

INDEX
LIGHT VENEER

AVODIRE

Information



Toll free: 877-355-8957 • Email: info@birdseyemaple.com • www.BirdsEyeMaple.com

INDEX
LIGHT VENEER

AVODIRE

BACK



ORIGIN – Africa

AVAILABILITY – Available.

COMMON PATTERNS – Quarter figured

COMMENTS – This west African species is light in color and often has a ropey figure with limited dimension and sequence. Occasionally, large spectacular logs become available.



Toll free: 877-355-8957 • Email: info@birdseyemaple.com • www.BirdsEyeMaple.com

INDEX
LIGHT VENEER

ASH

Information



Toll free: 877-355-8957 • Email: info@birdseyemaple.com • www.BirdsEyeMaple.com

INDEX
LIGHT VENEER

ASH

BACK



ORIGIN – Europe

AVAILABILITY – Limited.

COMMON PATTERNS – Flat cut and quarter sliced

COMMENTS – European ash is a light colored veneer with strong grain. Figured and non-figured logs may be available. Quartered logs will have narrow bundles and limited sequences. Flat cut figured logs are more rare.



Toll free: 877-355-8957 • Email: info@birdseyemaple.com • www.BirdsEyeMaple.com

INDEX
LIGHT VENEER

Ash
(Tamo)

Information



Toll free: 877-355-8957 • Email: info@birdseyemaple.com • www.BirdsEyeMaple.com

INDEX
LIGHT VENEER

Ash
(Tamo)

BACK



ORIGIN – Asia

COMMON PATTERNS – Rotary

COMMENTS – Tamo ash is a rotary sliced veneer with strong grain and peanut figure. Tamo ash is often called Japanese ash. The highest quality logs have uniform color and tight figure. Most logs evolve from loose figure (right) to tighter figure (left). Color is tan with most logs showing some variation of color through the log and across the leaves.



Toll free: 877-355-8957 • Email: info@birdseyemaple.com • www.BirdsEyeMaple.com

INDEX LIGHT VENEER

SEN

Information



Toll free: 877-355-8957 • Email: info@birdseyemaple.com • www.BirdsEyeMaple.com

INDEX
LIGHT VENEER

SEN

BACK



ORIGIN – Asia

AVAILABILITY – Limited.

COMMON PATTERNS – Flat cut, flat cut figured, and quarter figured

COMMENTS – Sen is a form of ash with strong grain and silver to tan color. The heart of many flat cut logs evolves from wild to narrow cathedral patterns. Logs can be figured or non-figured.



Toll free: 877-355-8957 • Email: info@birdseyemaple.com • www.BirdsEyeMaple.com

INDEX
LIGHT VENEER

SATINWOOD

Information



Toll free: 877-355-8957 • Email: info@birdseyemaple.com • www.BirdsEyeMaple.com

INDEX
LIGHT VENEER

SATINWOOD

BACK



ORIGIN – Asia

AVAILABILITY – Limited.

COMMON PATTERNS – Quarter figured

COMMENTS – Satinwood is one of the premium light colored veneers. Quarter figured logs (right photo) represents the highest grade. Logs are usually small with limited sequences. Four to six inch widths would be common. Very expensive.



Toll free: 877-355-8957 • Email: info@birdseyemaple.com • www.BirdsEyeMaple.com

INDEX
LIGHT VENEER

PLANE

Information



Toll free: 877-355-8957 • Email: info@birdseyemaple.com • www.BirdsEyeMaple.com

INDEX
LIGHT VENEER

PLANE

BACK



ORIGIN – Europe

AVAILABILITY – Limited.

COMMON PATTERNS – Quarter cut

COMMENTS – Plane or planetree is a soft toned veneer with small flake when quarter sliced. Flake size and pattern will evolve quickly through each sequence. Consistency of pattern is difficult to maintain using this species.



Toll free: 877-355-8957 • Email: info@birdseyemaple.com • www.BirdsEyeMaple.com

INDEX
LIGHT VENEER

ELM

Information



Toll free: 877-355-8957 • Email: info@birdseyemaple.com • www.BirdsEyeMaple.com

INDEX
LIGHT VENEER

ELM

BACK



ORIGIN – North America

AVAILABILITY – Limited.

COMMON PATTERNS – Flat cut (upper left and center) and quarter cut (upper right)

COMMENTS – Elm is a veneer with limited availability because of Dutch Elm disease. High quality logs have soft tan color with consistent grain.

INDEX
LIGHT VENEER

CEREJEIRA

Information



Toll free: 877-355-8957 • Email: info@birdseyemaple.com • www.BirdsEyeMaple.com

INDEX
LIGHT VENEER

CEREJEIRA

BACK



ORIGIN – Central and South America

AVAILABILITY – Limited.

COMMON PATTERNS – Flat cut

COMMENTS –The species is usually gold in color with wild dark red grain patterns. Patterns will evolve quickly through sequences.



Toll free: 877-355-8957 • Email: info@birdseyemaple.com • www.BirdsEyeMaple.com

INDEX
LIGHT VENEER

WHITE OAK

Information



Toll free: 877-355-8957 • Email: info@birdseyemaple.com • www.BirdsEyeMaple.com

INDEX
LIGHT VENEER

WHITE OAK

BACK



ORIGIN – North America and Europe

AVAILABILITY – Available.

COMMON PATTERNS – Flat cut, quartered, rift, figured and non figured

COMMENTS – Oak is one of the staple veneers of North American and Europe. Red oak and white oak are very similar in color, grain, and structure. Rift cut logs (upper right machine) will produce straight grain without flake. Quartered logs will often have a flake pattern (top center) in the grain.



Toll free: 877-355-8957 • Email: info@birdseyemaple.com • www.BirdsEyeMaple.com

INDEX
LIGHT VENEER

CHEN

Information



Toll free: 877-355-8957 • Email: info@birdseyemaple.com • www.BirdsEyeMaple.com

INDEX
LIGHT VENEER

CHEN

BACK



ORIGIN – Africa

AVAILABILITY – Limited.

COMMON PATTERNS – Quartered

COMMENTS – These photos represent the wide range of character and look displayed by some species. The pattern on the right is very unusual for the species. Chen is usually light in color with a mild stripe of interlocking grain. The veneer is very soft.



Toll free: 877-355-8957 • Email: info@birdseyemaple.com • www.BirdsEyeMaple.com

INDEX
MED VENEER

LIMBA
(Frake)

Information



Toll free: 877-355-8957 • Email: info@birdseyemaple.com • www.BirdsEyeMaple.com

INDEX
MED VENEER

LIMBA
(Frake)

BACK



ORIGIN – Africa

AVAILABILITY – Limited.

COMMON PATTERNS – Quartered and quarter figured

COMMENTS – These photos represent the wide range of character and look displayed by some species. The pattern on the right is a form of limba called frake. Limba is usually light in color with coarse texture.



Toll free: 877-355-8957 • Email: info@birdseyemaple.com • www.BirdsEyeMaple.com

INDEX
MED VENEER

HICKORY

Information



Toll free: 877-355-8957 • Email: info@birdseyemaple.com • www.BirdsEyeMaple.com

INDEX
MED VENEER

HICKORY

BACK



ORIGIN – Eastern North America

AVAILABILITY – Available.

COMMON PATTERNS – Flat cut and quartered

COMMENTS – Hickory is a fine textured close grained veneer in soft tan tones.



Toll free: 877-355-8957 • Email: info@birdseyemaple.com • www.BirdsEyeMaple.com

INDEX
LIGHT VENEER

SASSAFRAS

Information



Toll free: 877-355-8957 • Email: info@birdseyemaple.com • www.BirdsEyeMaple.com

INDEX
LIGHT VENEER

SASSAFRAS

BACK



ORIGIN – Eastern North America

AVAILABILITY – Available.

COMMON PATTERNS – Flat cut and quartered

COMMENTS – Sassafras is sometimes called golden elm. The veneer has a strong grain similar to ash.



Toll free: 877-355-8957 • Email: info@birdseyemaple.com • www.BirdsEyeMaple.com

INDEX
MED VENEER

ITALIAN WALNUT

Information



Toll free: 877-355-8957 • Email: info@birdseyemaple.com • www.BirdsEyeMaple.com

INDEX
MED VENEER

ITALIAN WALNUT

BACK



ORIGIN – Europe

AVAILABILITY – Limited.

COMMON PATTERNS – Flat cut, figured and non-figured

COMMENTS – Italian walnut is the sap part of regular European walnut. The color will range from pink tones to light tan with wide and often wild grain lines.



Toll free: 877-355-8957 • Email: info@birdseyemaple.com • www.BirdsEyeMaple.com

INDEX
LIGHT VENEER

MOVINGUE

Information



Toll free: 877-355-8957 • Email: info@birdseyemaple.com • www.BirdsEyeMaple.com

INDEX
LIGHT VENEER

MOVINGUE

BACK



ORIGIN – Africa

AVAILABILITY – Available.

COMMON PATTERNS – Quarter figured

COMMENTS – This African species is similar to the highly priced satinwood from Asia. The veneer will range in color from light yellow to yellowish brown tones. Highly figured logs are most prized.



Toll free: 877-355-8957 • Email: info@birdseyemaple.com • www.BirdsEyeMaple.com

INDEX
MED VENEER

GABOON
(Okoume)

Information



Toll free: 877-355-8957 • Email: info@birdseyemaple.com • www.BirdsEyeMaple.com

INDEX
MED VENEER

GABOON
(Okoume)

BACK



ORIGIN – Africa

AVAILABILITY – Available.

COMMON PATTERNS – Quarter figured

COMMENTS – A soft roll figure is common in this species. Color is usually pale pink to reddish brown. Logs can be large with good sequences.



Toll free: 877-355-8957 • Email: info@birdseyemaple.com • www.BirdsEyeMaple.com

INDEX
MED VENEER

RED GUM

Information



Toll free: 877-355-8957 • Email: info@birdseyemaple.com • www.BirdsEyeMaple.com

INDEX
MED VENEER

RED GUM

BACK



ORIGIN – Southern United States

AVAILABILITY – Limited.

COMMON PATTERNS – Quartered and flat cut

COMMENTS – Red gum is always sliced with light colored sap in the veneer which is used in panels to create wild contrasting patterns. Heart wood is pink to gray. Wild color patterns is common. Sequences are limited and patterns evolve quickly.



Toll free: 877-355-8957 • Email: info@birdseyemaple.com • www.BirdsEyeMaple.com

INDEX
MED VENEER

PEARWOOD

Information



Toll free: 877-355-8957 • Email: info@birdseyemaple.com • www.BirdsEyeMaple.com

INDEX
MED VENEER

PEARWOOD

BACK



ORIGIN – Europe

AVAILABILITY – Limited.

COMMON PATTERNS – Quartered, flat cut, figured and non-figured

COMMENTS – Pearwood or Swiss Pear is a fine textured veneer in soft rose tones. Logs are not usually large and dark streak defects evolve in and out of sequences. Pearwood will change into darker tones over time.



Toll free: 877-355-8957 • Email: info@birdseyemaple.com • www.BirdsEyeMaple.com

INDEX
MED VENEER

AFRORMOSIA

Information



Toll free: 877-355-8957 • Email: info@birdseyemaple.com • www.BirdsEyeMaple.com

INDEX
MED VENEER

AFRORMOSIA

BACK



ORIGIN – Africa

AVAILABILITY – Rare.

COMMON PATTERNS – Quartered or quarter figured

COMMENTS – Afrormosia may be similar to light teak without the oily structure. Light stripe or ropey figure is desirable. Afrormosia will darken over time.



Toll free: 877-355-8957 • Email: info@birdseyemaple.com • www.BirdsEyeMaple.com

INDEX
MED VENEER

OLIVE ASH

Information



Toll free: 877-355-8957 • Email: info@birdseyemaple.com • www.BirdsEyeMaple.com

INDEX
MED VENEER

OLIVE ASH

BACK



ORIGIN – Europe

AVAILABILITY – Limited.

COMMON PATTERNS – Quartered or flat cut

COMMENTS – Olive ash heart wood can be linear or wild in structure. Occasionally, figured logs are sliced for the market. Most veneer will have light colored sap as part of the cut and could be considered a design element in panels.

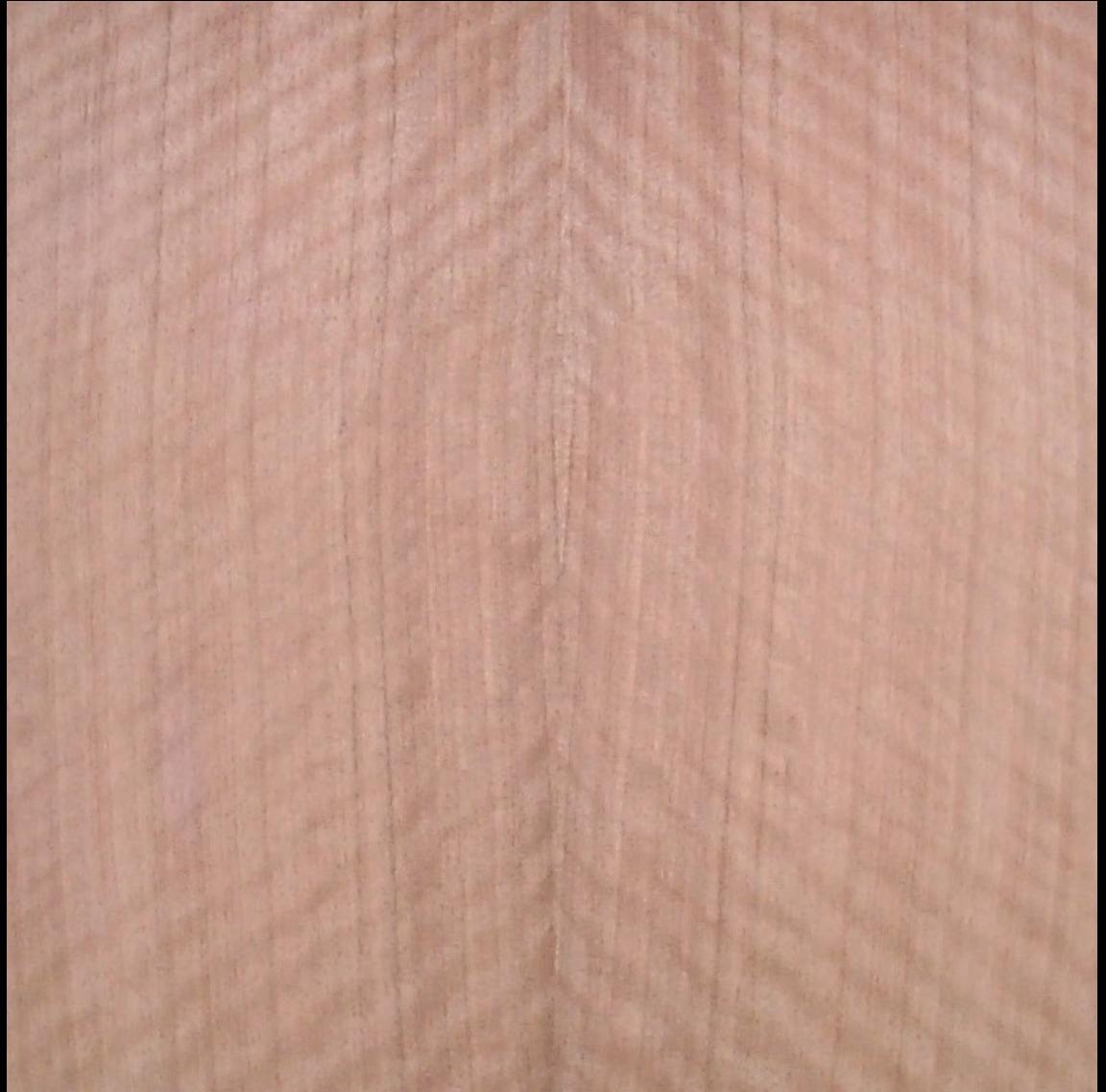


Toll free: 877-355-8957 • Email: info@birdseyemaple.com • www.BirdsEyeMaple.com

INDEX
MED VENEER

NYATOH

Information



Toll free: 877-355-8957 • Email: info@birdseyemaple.com • www.BirdsEyeMaple.com

INDEX
MED VENEER

NYATOH

BACK



ORIGIN – Asia

AVAILABILITY – Rare.

COMMON PATTERNS – Quarter figured

COMMENTS – Nyatoh can range in color from light pink tones toward reddish brown or yellow. Stripe or color variation across the veneer leaf should be expected. Pins and other minor defects are common.



Toll free: 877-355-8957 • Email: info@birdseyemaple.com • www.BirdsEyeMaple.com

INDEX
MED VENEER

PRIMA VERA

Information



Toll free: 877-355-8957 • Email: info@birdseyemaple.com • www.BirdsEyeMaple.com

INDEX
MED VENEER

PRIMA VERA

BACK



ORIGIN – Central America

AVAILABILITY – Rare.

COMMON PATTERNS – Quartered

COMMENTS – This yellow to pink veneer is not commonly used but exceptional logs do occasionally become available. Most logs are small.



Toll free: 877-355-8957 • Email: info@birdseyemaple.com • www.BirdsEyeMaple.com

INDEX
MED VENEER

CHERRY

More
Photos



Toll free: 877-555-8957 • Email: info@birdseyemaple.com • www.BirdsEyeMaple.com

INDEX
MED VENEER

CHERRY

Information



Previous
Pictures



Toll free: 877-355-8957 • Email: info@birdseyemaple.com • www.BirdsEyeMaple.com

INDEX
MED VENEER

CHERRY

BACK



ORIGIN – North America

AVAILABILITY – Available.

COMMON PATTERNS – Flat cut, quartered, figured and non-figured

COMMENTS – Cherry is one of the premium veneers of North America. Logs can be large and available in many color shades and patterns. The most common defects are gum streaks (upper left) which evolve in and out of the grain.



Toll free: 877-355-8957 • Email: info@birdseyemaple.com • www.BirdsEyeMaple.com

INDEX
MED VENEER

EUCALYPTUS

Information



Toll free: 877-355-8957 • Email: info@birdseyemaple.com • www.BirdsEyeMaple.com

INDEX
MED VENEER

EUCALYPTUS

BACK



ORIGIN – North America, Australia, Europe, South America

AVAILABILITY – Limited.

COMMON PATTERNS – Quarter figured

COMMENTS – Eucalyptus is a species found in many parts of the world. Colors will range from yellow into tan and red tones. Quarter figured logs are in highest demand. Beeswing figure (upper right) and fiddle back figure (upper center) are common patterns. Red eucalyptus (lower right) is not a common color.



Toll free: 877-355-8957 • Email: info@birdseyemaple.com • www.BirdsEyeMaple.com

INDEX
MED VENEER

EUCALYPTUS
(Pommele)

Information



Toll free: 877-355-8957 • Email: info@birdseyemaple.com • www.BirdsEyeMaple.com

INDEX
MED VENEER

EUCALYPTUS (Pommele)

BACK



ORIGIN – North America, Australia, Europe, South America

AVAILABILITY – Limited.

COMMON PATTERNS – Pommele (burl)

COMMENTS – Rotary sliced pommele eucalyptus is often described as eucalyptus burl because of the similarity of the pattern to a true burl. Veneer will range in color to light tan into pink and brown tones. Some variation in pattern across each leaf is normal (upper left). Stripes and some grain patterns should be expected.



Toll free: 877-355-8957 • Email: info@birdseyemaple.com • www.BirdsEyeMaple.com

INDEX
BURLS

EUCALYPTUS (Burl)

Information



Toll free: 877-355-8957 • Email: info@birdseyemaple.com • www.BirdsEyeMaple.com

INDEX
MED VENEER

EUCALYPTUS (Burl)

BACK



ORIGIN – North America, Australia, Europe, South America

AVAILABILITY – Limited.

COMMON PATTERNS – Pommele (burl)

COMMENTS – Rotary sliced pommele eucalyptus is often described as eucalyptus burl because of the similarity of the pattern to a true burl. Veneer will range in color to light tan into pink and brown tones. Some variation in pattern across each leaf is normal (upper left). Stripes and some grain patterns should be expected.



Toll free: 877-355-8957 • Email: info@birdseyemaple.com • www.BirdsEyeMaple.com

INDEX
MED VENEER

ZEBRAWOOD
(Zebrano)

Information



Toll free: 877-355-8957 • Email: info@birdseyemaple.com • www.BirdsEyeMaple.com

INDEX
MED VENEER

ZEBRAWOOD

(Zebrano)

BACK



ORIGIN – Africa

AVAILABILITY – Available.

COMMON PATTERNS – Quartered

COMMENTS – The name is derived from the obvious stripe pattern displayed in the veneer. Most logs are light in color (upper left) to slightly darker tones. Pins and flares are common defects. Narrow cuts and limited sequences is normal for most quartered veneers.



Toll free: 877-355-8957 • Email: info@birdseyemaple.com • www.BirdsEyeMaple.com

INDEX MED VENEER

PALDAO

Information



Toll free: 877-355-8957 • Email: info@birdseyemaple.com • www.BirdsEyeMaple.com

INDEX
MED VENEER

PALDAO

BACK



ORIGIN – Philippines

AVAILABILITY – Limited.

COMMON PATTERNS – Quartered or quarter figured

COMMENTS – Paldao is usually sliced into quarters but occasionally nice flat cut logs become available. The veneer is silver to brown on color with dark streaks. Quartered veneer is narrow and sequences are limited. With stain this veneer could simulate ebony.



Toll free: 877-355-8957 • Email: info@birdseyemaple.com • www.BirdsEyeMaple.com

INDEX
MED VENEER

BOSSE

Information



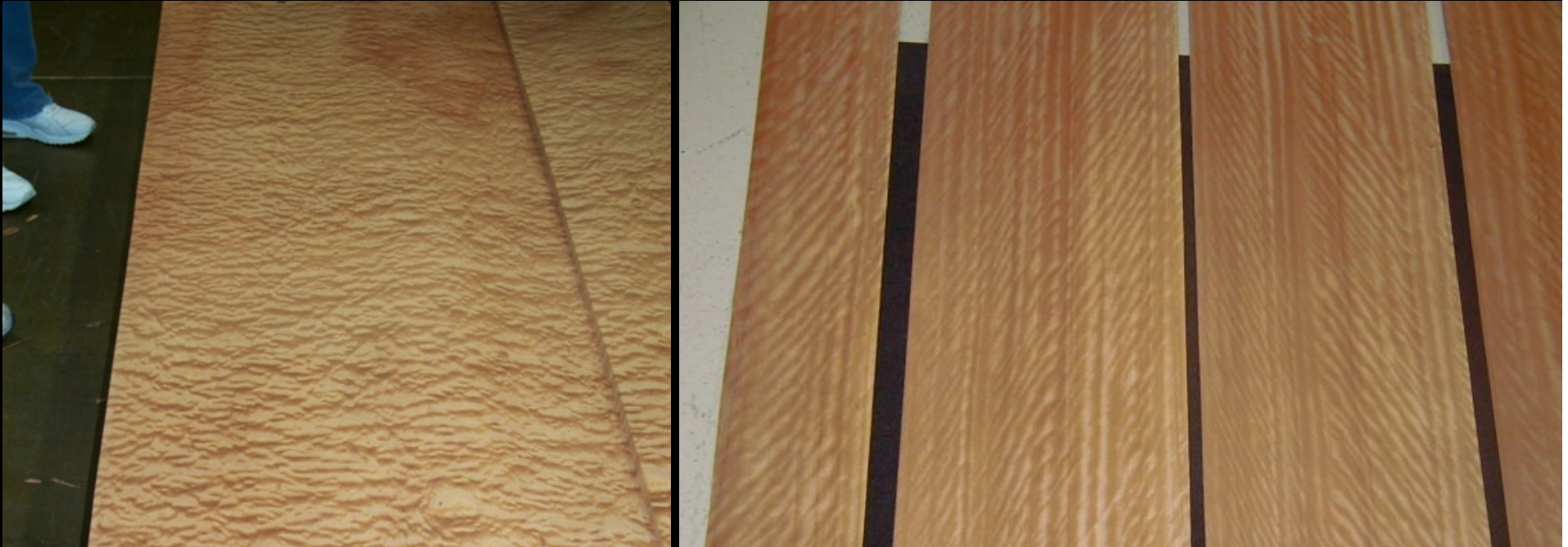
Toll free:

info@birdseyemaple.com • www.BirdsEyeMaple.com

INDEX
MED VENEER

BOSSE

BACK



ORIGIN – Africa

AVAILABILITY – Limited.

COMMON PATTERNS – Quartered or pommele

COMMENTS – Bosse is often called “African Cedar”. The veneer can be quartered with strong figure or rotary sliced producing pommele patterns. Exceptional logs with consistent color and figure are very rare. Sequences are limited.

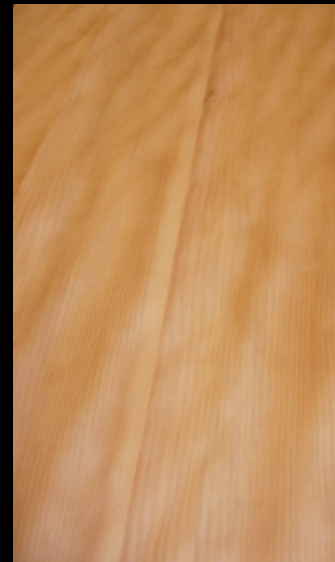


Toll free: 877-355-8957 • Email: info@birdseyemaple.com • www.BirdsEyeMaple.com

INDEX MED VENEER

CEDAR (Spanish)

Information



Toll free: 877-355-8957 • Email: info@birdseyemaple.com • www.BirdsEyeMaple.com

INDEX
MED VENEER

CEDAR
(Spanish)

BACK



ORIGIN – Central America

AVAILABILITY – Limited.

COMMON PATTERNS – Pommele or quartered

COMMENTS – Spanish cedar is usually light reddish brown color. Most logs are small with unique patterns. Consistency through the flitch will be limited.

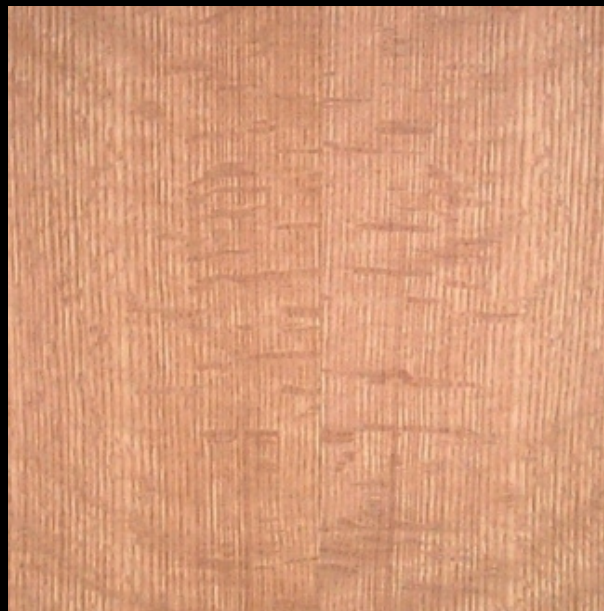


Toll free: 877-355-8957 • Email: info@birdseyemaple.com • www.BirdsEyeMaple.com

INDEX
MED VENEER

RED OAK

Information



Toll free: 877-355-8957 • Email: info@birdseyemaple.com • www.BirdsEyeMaple.com

INDEX
MED VENEER

RED OAK

BACK



ORIGIN – North America

AVAILABILITY – Available.

COMMON PATTERNS – Flat cut, quartered, figured, and non-figured

COMMENTS – Red oak is a general name that represents many members of the “oak” family. Red oak veneer typically has strong grain and pink to reddish color tones. Quartered logs can have a random flake pattern (upper center). High quality logs can be free of major defects with large sequences and consistent patterns.

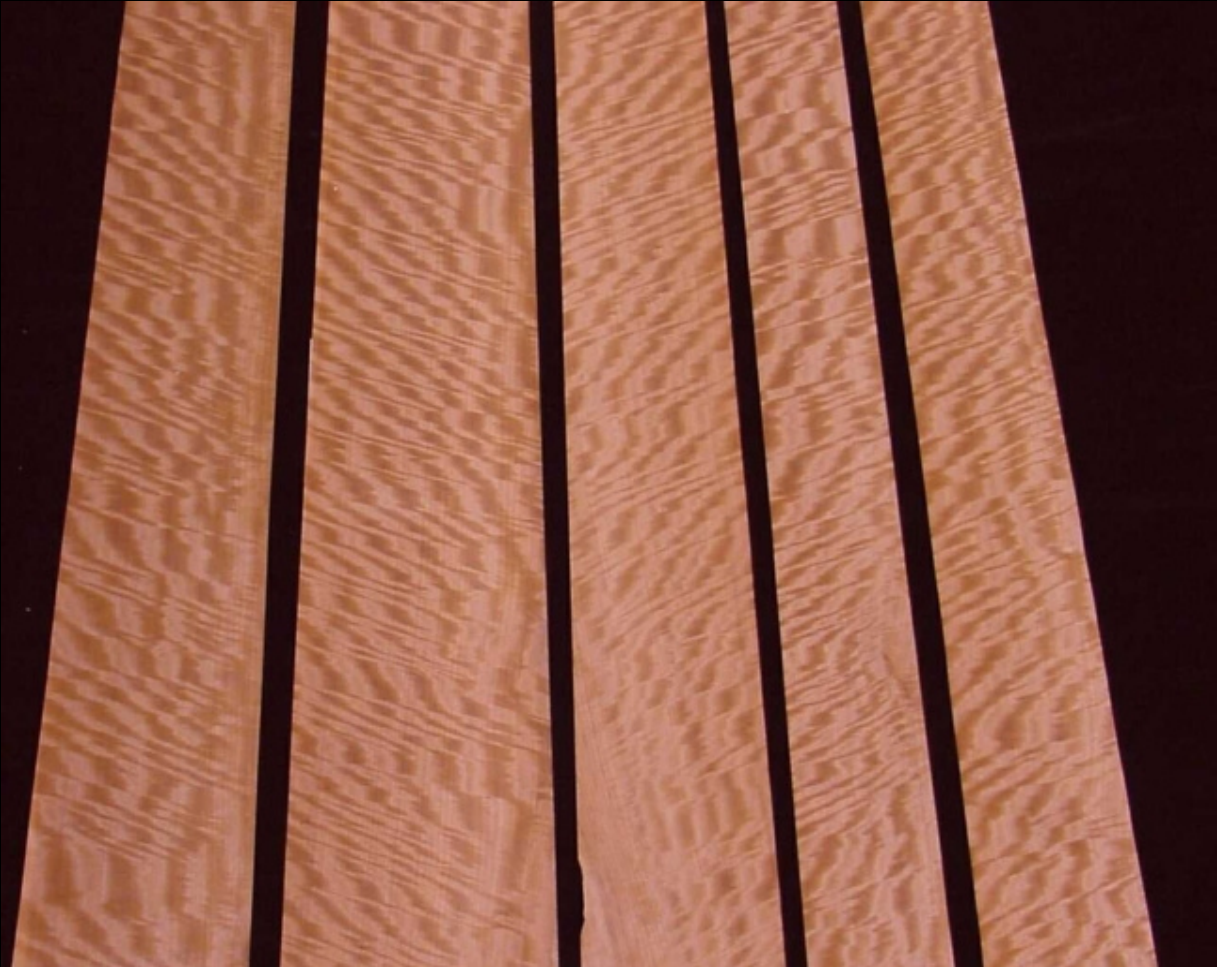


Toll free: 877-355-8957 • Email: info@birdseyemaple.com • www.BirdsEyeMaple.com

INDEX
DARK VENEER

MAKORE

More
Photos



Toll free: 877-355-8957 • Email: info@birdseyemaple.com • www.BirdsEyeMaple.com

INDEX
DARK VENEER

MAKORE

Information



Previous
Pictures



Toll free: 877-355-8957 • Email: info@birdseyemaple.com • www.BirdsEyeMaple.com

INDEX
DARK VENEER

MAKORE

BACK



ORIGIN – Africa

AVAILABILITY – Available.

COMMON PATTERNS – Flat cut, quartered, figured, and non-figured

COMMENTS – Makore is one of the premium veneers of Africa. This veneer is sometimes called “African Cherry” because of the light red color. Makore logs can be huge producing large quantities of quality veneer. Many patterns are available. Sequences can be defect free and very consistent.



Toll free: 877-355-8957 • Email: info@birdseyemaple.com • www.BirdsEyeMaple.com

INDEX DARK VENEER

MAKORE (Pommele)

Information



Toll free: 877-355-8957 • Email: info@birdseyemaple.com • www.BirdsEyeMaple.com

INDEX
DARK VENEER

MAKORE
(Pommele)

BACK



ORIGIN – Africa

AVAILABILITY – Limited.

COMMON PATTERNS – Pommele

COMMENTS – Pommele makore is a spectacular pattern that is can range in color from tan into dark orange red tones. Leaf width can exceed 20 inches (50 cm) in some sequences. Dark spots and inconsistent bubble size are common patterns seen in this veneer choice.



Toll free: 877-355-8957 • Email: info@birdseyemaple.com • www.BirdsEyeMaple.com

INDEX MED VENEER

KOA

Information



Toll free: 877-355-8957 • Email: info@birdseyemaple.com • www.BirdsEyeMaple.com

INDEX
MED VENEER

KOA

BACK



ORIGIN – Hawaii

AVAILABILITY – Limited.

COMMON PATTERNS – Quarterd and quarter figured

COMMENTS – Koa is only available from Hawaii. Koa is yellow to reddish brown with strong wavy streaks. The veneer has a strong luster and figured logs can be extraordinary. Flares and pins are common in sequences (upper center).



Toll free: 877-355-8957 • Email: info@birdseyemaple.com • www.BirdsEyeMaple.com

INDEX
MED VENEER

LACEWOOD

Information



Toll free: 877-355-8957 • Email: info@birdseyemaple.com • www.BirdsEyeMaple.com

INDEX
MED VENEER

LACEWOOD

BACK



ORIGIN – Australia

AVAILABILITY – Limited.

COMMON PATTERNS – Quartered with flake

COMMENTS – Lacewood or “Silky Oak” can be pink to yellow with a silvery sheen. The flake is the dominant characteristic. Flake size will generally evolve quickly through each sequence. Flake size can range from very small to about a centimeter.

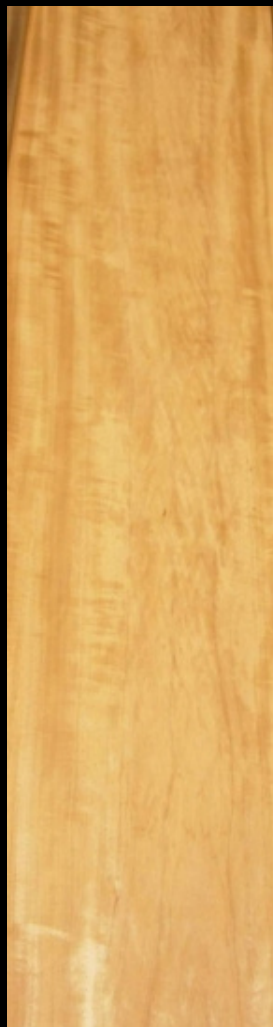


Toll free: 877-355-8957 • Email: info@birdseyemaple.com • www.BirdsEyeMaple.com

INDEX
MED VENEER

TIMBORANA

Information

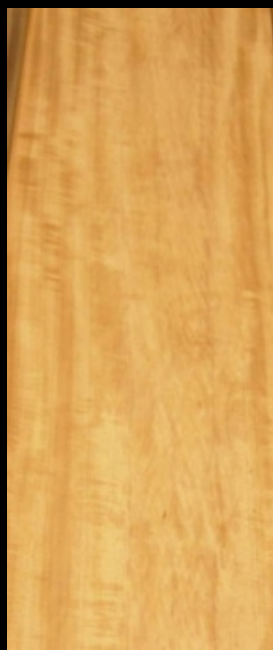


Toll free: 877-355-8957 • Email: info@birdseyemaple.com • www.BirdsEyeMaple.com

INDEX
MED VENEER

TIMBORANA

BACK



ORIGIN – South America

AVAILABILITY – Limited.

COMMON PATTERNS – Flat cut

COMMENTS – Timborana or “South American Cherry” is usually flat cut with mild to strong figure that crosses the heart (upper left). Big high quality logs are limited and not always available. Pin knots are a common defect.



Toll free: 877-355-8957 • Email: info@birdseyemaple.com • www.BirdsEyeMaple.com

INDEX
MED VENEER

MAHOGANY

More
Photos



Email: info@birdseyemaple.com • www.BirdsEyeMaple.com

INDEX
MED VENEER

MAHOGANY

Information



Previous
Pictures



Toll free: 877-355-8957 • Email: info@birdseyemaple.com • www.BirdsEyeMaple.com

INDEX
MED VENEER

MAHOGANY

BACK



ORIGIN – South America, Central America, and Africa

AVAILABILITY – Available.

COMMON PATTERNS – Flat cut, quarter cut, pommele, figured and non figured

COMMENTS – Mahogany is a common tropical veneer logged in many different areas around the world. African (khaya) and Central American (Honduran) mahogany can have many different patterns. The highest quality logs can have big sequences, consistent patterns, and have minimal defects. Figured logs can be exceptional.



Toll free: 877-355-8957 • Email: info@birdseyemaple.com • www.BirdsEyeMaple.com

INDEX
DARK VENEER

ETIMOEE

More
Photos



8957 • Email: info@birdseyemaple.com • www.BirdsEyeMaple.com

INDEX
DARK VENEER

ETIMOEE

Information



Previous
Pictures



Toll free: 877-555-5557 • Email: info@birds-eye-maple.com • www.BirdsEyeMaple.com

INDEX
DARK VENEER

ETIMOE

BACK



ORIGIN – Africa

AVAILABILITY – Available in some forms.

COMMON PATTERNS – Flat cut, quarter cut, marbled, figured and non figured

COMMENTS –Etimoe is sliced in many different patterns. Quartered and quarter figured are most common. Dark spots is a common defect in most logs. Marbled etimoe is very rare. Color will range from light reddish tones to dark red and brown. Figured veneer is very desirable. Mineral crystals in the grain is possible.



Toll free: 877-355-8957 • Email: info@birdseyemaple.com • www.BirdsEyeMaple.com

INDEX
DARK VENEER

BUBINGA

Information

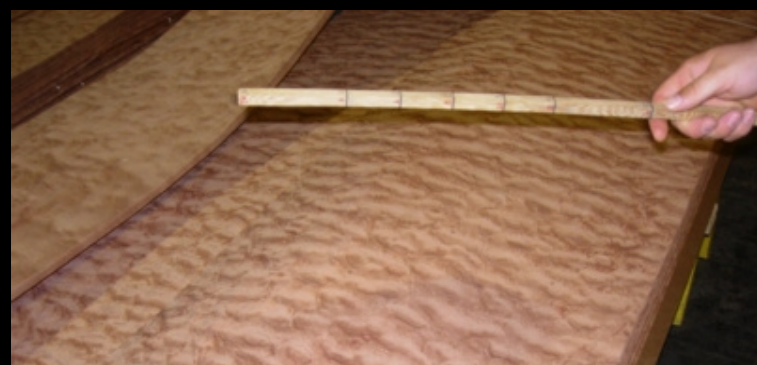


Toll free: 877-355-8957 • Email: info@birdseyemaple.com • www.BirdsEyeMaple.com

INDEX
DARK VENEER

BUBINGA

BACK

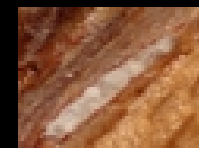


ORIGIN – Africa

AVAILABILITY – Available in some forms.

COMMON PATTERNS – Flat cut, quarter cut, waterfall, figured and non figured

COMMENTS –Bubinga logs can be very large producing thousands of square feet of quality veneer. Waterfall bubinga is rotary sliced (upper right) and will have big dimension leaves. Mineral crystals are occasionally visible in the grain.



Toll free: 877-355-8957 • Email: info@birdseyemaple.com • www.BirdsEyeMaple.com

INDEX
DARK VENEER

ZIRICOTE

Information



Toll free: 877-355-8957 • Email: info@birdseyemaple.com • www.BirdsEyeMaple.com

INDEX
DARK VENEER

ZIRICOTE

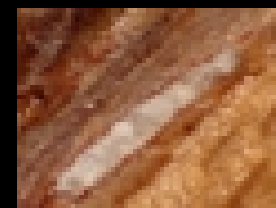
BACK



ORIGIN – Central America

AVAILABILITY – Limited.

COMMON PATTERNS – Flat cut with some quarters



COMMENTS –Ziricote (ciricote) is a dark gray to brown veneer often with wild truncated heart patterns. Mineral is a common occurrence in this species.



Toll free: 877-355-8957 • Email: info@birdseyemaple.com • www.BirdsEyeMaple.com

INDEX
DARK VENEER

PADAUK

Information



Toll free: 877-355-8957 • Email: info@birdseyemaple.com • www.BirdsEyeMaple.com

INDEX
DARK VENEER

PADAUK

BACK



ORIGIN – Africa

AVAILABILITY – Limited.

COMMON PATTERNS – Flat cut and quarter cut

COMMENTS – Big logs of high quality are rare. Color can range from yellow to dark orange red.



Toll free: 877-355-8957 • Email: info@birdseyemaple.com • www.BirdsEyeMaple.com

INDEX DARK VENEER

Sapele (Pommele)

Information



To

l: info@birdseyemaple.com • www.BirdsEyeMaple.com

INDEX
DARK VENEER

Sapele
(Pommele)

BACK



ORIGIN – Africa

AVAILABILITY – Limited.

COMMON PATTERNS – Pommele (rotary cut)

COMMENTS – There is great range of character in pommele sapele from one log to the next. Color can range from light to dark red tones. Most logs have some grain. Inconsistent bubble size is normal. Sequences can be large with big dimension leaves.



Toll free: 877-355-8957 • Email: info@birdseyemaple.com • www.BirdsEyeMaple.com

INDEX
DARK VENEER

SAPELE

Information



Toll free: 877-355-8957 • Email: info@birdseyemaple.com • www.BirdsEyeMaple.com

INDEX
DARK VENEER

SAPELE

BACK



ORIGIN – Africa

AVAILABILITY – Available in most cuts and patterns.

COMMON PATTERNS – Flat cut, quartered, figured and non-figured

COMMENTS –Sapele is usually available in flat cut (upper center) and quarter cut veneer. Quarter figured logs with good dimension and consistent figure (upper left) are getting more rare. Most quartered logs will have a strong stripe or broken stripe pattern (upper right). There is a wide range of color in this species.

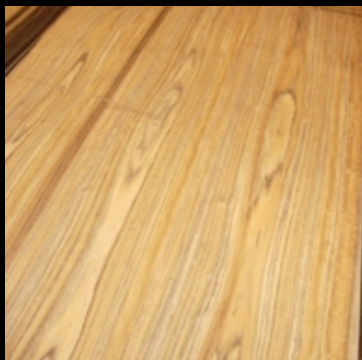


Toll free: 877-355-8957 • Email: info@birdseyemaple.com • www.BirdsEyeMaple.com

INDEX
DARK VENEER

MOZAMBIQUE
(Ovangkol)

Information



Toll free: 877-355-8957 • Email: info@birdseyemaple.com • www.BirdsEyeMaple.com

INDEX
DARK VENEER

MOZAMBIQUE (Ovangkol)

BACK



ORIGIN – Africa

AVAILABILITY – Limited.

COMMON PATTERNS – Flat cut, quartered, figured and non-figured

COMMENTS – Mozambique (Ovangkol) is a coarse grained with a wide range of color and pattern. Most logs will have a hard dark streak running with the grain. Contrast and strong figure patterns are common characteristics.



Toll free: 877-355-8957 • Email: info@birdseyemaple.com • www.BirdsEyeMaple.com

INDEX
DARK VENEER

KOSIPO

Information



Toll free: 877-355-8957 • Email: info@birdseyemaple.com • www.BirdsEyeMaple.com

INDEX
DARK VENEER

KOSIPO

BACK



ORIGIN – Africa

AVAILABILITY – Limited.

COMMON PATTERNS – Quartered

COMMENTS – Kosipo is a veneer similar to pommele sapele that has been sliced into quarters creating different pattern. The top photo is most typical. The grain pattern will usually be wavy with a stripe pattern.



Toll free: 877-355-8957 • Email: info@birdseyemaple.com • www.BirdsEyeMaple.com

INDEX DARK VENEER

BRAZILIAN ROSEWOOD

Information



Toll free: 877-355-8957 • Email: info@birdseyemaple.com • www.BirdsEyeMaple.com

INDEX
DARK VENEER

BRAZILIAN
ROSEWOOD

BACK



ORIGIN – Brazil

AVAILABILITY – Very Rare.

COMMON PATTERNS – Flat cut

COMMENTS – The logging and slicing of Brazilian rosewood has been restricted for many years. Several quality logs are available that have been imported many years ago before restrictions. The veneer is very expensive. Customer viewing of available logs can be arranged for special projects.



Toll free: 877-355-8957 • Email: info@birdseyemaple.com • www.BirdsEyeMaple.com

INDEX
DARK VENEER

LAUREL
(East Indian)

Information



Toll free: 877-355-8957 • Email: info@birdseyemaple.com • www.BirdsEyeMaple.com

INDEX
DARK VENEER

LAUREL
(East Indian)

BACK

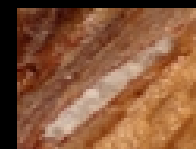


ORIGIN – Asia (India)

AVAILABILITY – Limited.

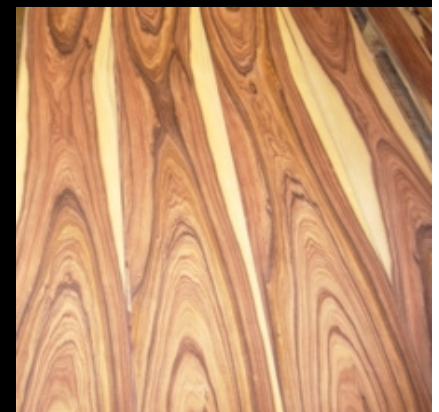
COMMON PATTERNS – Flat cut and quarter cut

COMMENTS – The heartwood is light to dark brown with irregular dark streaks. Figured logs can be very special. This veneer is similar to walnut when finished. Mineral crystals in the grain is a common occurrence.



Toll free: 877-355-8957 • Email: info@birdseyemaple.com • www.BirdsEyeMaple.com

INDEX DARK VENEER **SANTOS ROSEWOOD** Information



Toll free: 877-355-8957 • Email: info@birdseyemaple.com • www.BirdsEyeMaple.com

INDEX

DARK VENEER

SANTOS ROSEWOOD

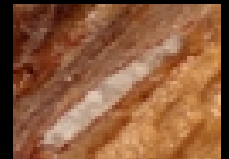
BACK



ORIGIN – South and Central America

AVAILABILITY – Available.

COMMON PATTERNS – Flat cut



COMMENTS – Color will range from yellow through orange into dark red. Most logs have a strong contrast and wild heart. Mineral crystals are possible in the grain of this veneer.

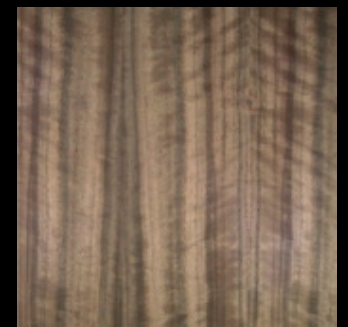


Toll free: 877-355-8957 • Email: info@birdseyemaple.com • www.BirdsEyeMaple.com

INDEX DARK VENEER

WALNUT (Australian)

Information



Toll free: 877-355-8957 • Email: info@birdseyemaple.com • www.BirdsEyeMaple.com

INDEX
DARK VENEER

WALNUT
(Australian)

BACK



ORIGIN – Australia

AVAILABILITY – Rare.

COMMON PATTERNS – Quartered or quarter figured

COMMENTS – Australian walnut or Queensland walnut is highly regulated out of Australia and is not always available. The veneer is usually has a strong stripe with contrasting pink and grey tones.



Toll free: 877-355-8957 • Email: info@birdseyemaple.com • www.BirdsEyeMaple.com

INDEX DARK VENEER

WALNUT (American Black)

Information



Toll free: 877-355-8957 • Email: info@birdseyemaple.com • www.BirdsEyeMaple.com

INDEX
DARK VENEER

WALNUT
(American Black)

BACK



ORIGIN – Eastern United States

AVAILABILITY – Available.

COMMON PATTERNS – Flat cut, quartered, figured or non-figured

COMMENTS – Black walnut is probably the premium dark North American veneer. Special logs are almost always available. Many logs will have flat cut and quartered veneer from the same tree. Knots and flares (upper right) are common defects.



Toll free: 877-355-8957 • Email: info@birdseyemaple.com • www.BirdsEyeMaple.com

INDEX DARK VENEER

WALNUT (European)

Information



Toll free: 877-355-8957 • Email: info@birdseyemaple.com • www.BirdsEyeMaple.com

INDEX
DARK VENEER

WALNUT
(European)

BACK



ORIGIN –Europe

AVAILABILITY – Available.

COMMON PATTERNS – Flat cut, quartered, figured or non-figured

COMMENTS – European walnut includes Circassian walnut and French walnut. The veneer is lighter in color compared to American walnut with stronger grain. The veneer is significantly more expensive than the American form. The lighter outer part of the veneer is sap and is considered strong design element of the veneer.



Toll free: 877-355-8957 • Email: info@birdseyemaple.com • www.BirdsEyeMaple.com

INDEX MED VENEER

TEAK

Information



Toll free: 877-555-8957 • Email: info@birdseyemaple.com • www.BirdsEyeMaple.com

INDEX
MED VENEER

TEAK

BACK



ORIGIN –Asia

AVAILABILITY – Available.

COMMON PATTERNS – Flat cut, quartered, figured or non-figured

COMMENTS – Teak has been the premium veneer for yachts and marine applications for years. The veneer is usually clear of major defects and sequences are good. The species is naturally oily.



Toll free: 877-355-8957 • Email: info@birdseyemaple.com • www.BirdsEyeMaple.com

INDEX DARK VENEER

IMBUIA

Information



Toll free: 877-355-8957 • Email: info@birdseyemaple.com • www.BirdsEyeMaple.com

INDEX
DARK VENEER

IMBUIA

BACK



ORIGIN –South America

AVAILABILITY – Limited.

COMMON PATTERNS – Flat cut, quartered, pommele (burl)

COMMENTS – Imbuia is often called “South American walnut” because of the brown color although most logs are much lighter in color. Pommele imbuia (pommele burl) is one of the more common forms although high quality logs are rare.



Toll free: 877-355-8957 • Email: info@birdseyemaple.com • www.BirdsEyeMaple.com

INDEX
DARK VENEER

LOURO PRETO

Information



Toll free: 877-355-8957 • Email: info@birdseyemaple.com • www.BirdsEyeMaple.com

INDEX
DARK VENEER

LOURO PRETO

BACK



ORIGIN –South America

AVAILABILITY – Limited.

COMMON PATTERNS – Flat cut

COMMENTS – Louro Preto has a hard grain in a range of color. The photos above illustrate the color range from two logs. Blisters and dark streaks in the grain are common characteristics of the species. Heart patterns will evolve quickly through the sequences.



Toll free: 877-355-8957 • Email: info@birdseyemaple.com • www.BirdsEyeMaple.com

INDEX
DARK VENEER

WENGE

Information



Toll free: 877-355-8957 • Email: info@birdseyemaple.com • www.BirdsEyeMaple.com

INDEX
DARK VENEER

WENGE

BACK



ORIGIN –Africa

AVAILABILITY – Available.

COMMON PATTERNS – Flat cut and quarter cut

COMMENTS – Wenge veneer is one of the more consistent species in both flat cut and quarter cut. Logs can be large with nice sequence. The veneer is dark brown with tight grain. Mineral crystals in the grain is a common occurrence.



Mineral Crystals



Toll free: 877-355-8957 • Email: info@birdseyemaple.com • www.BirdsEyeMaple.com

INDEX
DARK VENEER

EBONY

Information



Toll free: 877-355-8957 • Email: info@birdseyemaple.com • www.BirdsEyeMaple.com

INDEX
DARK VENEER

EBONY

BACK



ORIGIN –Africa

AVAILABILITY – Limited.

COMMON PATTERNS – Flat cut and quarter cut

COMMENTS – Quarter cut ebony (upper left or right) is much more available compared to flat cut (upper center). Most quarter cut logs are very small consisting of 15 bundles or less. The veneer is usually black or brown with light colored streaks. Every log is different in character.



Toll free: 877-355-8957 • Email: info@birdseyemaple.com • www.BirdsEyeMaple.com

INDEX
MED VENEER

ANDIROBA

Information



Toll free: 877-355-8957 • Email: info@birdseyemaple.com • www.BirdsEyeMaple.com

INDEX
MED VENEER

ANDIROBA

BACK



ORIGIN –South America

AVAILABILITY – Rare.

COMMON PATTERNS –Quarter cut

COMMENTS – Most andiroba logs are small and of low quality. Occasionally, a special log comes on the market.



Toll free: 877-355-8957 • Email: info@birdseyemaple.com • www.BirdsEyeMaple.com

INDEX
DARK VENEER

JARRAH

Information



Toll free: 877-355-8957 • Email: info@birdseyemaple.com • www.BirdsEyeMaple.com

INDEX
DARK VENEER

JARRAH

BACK



ORIGIN –Australia

AVAILABILITY – Rare.

COMMON PATTERNS –Quarter cut (upper left) and flat cut (upper right)

COMMENTS – Jarrah logs range in color from dark reddish brown to lighter red or orange shades. Light streaks evolve in and out of logs which makes consistency of leaves in panels difficult.



Toll free: 877-355-8957 • Email: info@birdseyemaple.com • www.BirdsEyeMaple.com

INDEX
DARK VENEER

IPE

Information



Toll free: 877-355-8957 • Email: info@birdseyemaple.com • www.BirdsEyeMaple.com

INDEX
DARK VENEER

IPE

BACK



ORIGIN –Africa

AVAILABILITY – Rare.

COMMON PATTERNS –Quarter cut and flat cut

COMMENTS – Ipe is a species mainly used for decking and wooden stairs. Recently, special veneer logs have been produced. Color will range from brown to greenish black. Beeswing figure (upper left) is extremely rare. A broken stripe pattern is more common but still very limited (upper right).



Toll free: 877-355-8957 • Email: info@birdseyemaple.com • www.BirdsEyeMaple.com

INDEX
DARK VENEER

OAK
(Smoked)

Information



Toll free: 877-355-8957 • Email: info@birdseyemaple.com • www.BirdsEyeMaple.com

INDEX
DARK VENEER



OAK
(Smoked)



BACK



ORIGIN –Europe

AVAILABILITY – Rare.

COMMON PATTERNS –Quarter cut flat cut

COMMENTS – Smoked oak is an example of altering the natural color of veneer by a process of smoking. It is a new product and we have little experience in the product. The veneer can be dark in color ranging from black to dark brown with some variation across the leaf. The computer generated panel (upper right) represents a possible veneer rendering.



Toll free: 877-355-8957 • Email: info@birdseyemaple.com • www.BirdsEyeMaple.com

INDEX DARK VENEER

OAK (Bog)

Information



Toll free: 877-355-8957 • Email: info@birdseyemaple.com • www.BirdsEyeMaple.com

INDEX DARK VENEER

OAK (Bog)

BACK



ORIGIN –Europe

AVAILABILITY – Rare.

COMMON PATTERNS –Quarter cut flat cut

COMMENTS – As the name implies bog oaks were retrieved from bogs where the logs were preserved for hundreds or even thousands of years. The log pictured was over 4000 years old. Most of these unique logs have some gradation of color across each leaf from brown to greenish black.



Toll free: 877-355-8957 • Email: info@birdseyemaple.com • www.BirdsEyeMaple.com

INDEX
DARK VENEER

WALNUT
(Claro)

Information



Toll free: 877-355-8957 • Email: info@birdseyemaple.com • www.BirdsEyeMaple.com

INDEX
DARK VENEER

WALNUT
(Claro)

BACK



ORIGIN –North America

AVAILABILITY – Limited.

COMMON PATTERNS –Quarter cut flat cut

COMMENTS – Claro walnut comes from the form of walnut that produces famous California walnut burl. Although logs can be large, flares and knots dominate the veneer surface. The color and contrasting patterns is similar to European French walnut.



Toll free: 877-355-8957 • Email: info@birdseyemaple.com • www.BirdsEyeMaple.com

INDEX
MED VENEER

TINEO

Information



• Email: info@birdseyemaple.com • www.BirdsEyeMaple.com

INDEX
MED VENEER

TINEO

BACK



ORIGIN –South America

AVAILABILITY – Limited.

COMMON PATTERNS –Quarter cut flat cut

COMMENTS – Tineo is a veneer marketed in Europe from South America that is beginning to show up in United States markets. It is similar to red gum in pattern with limited sequences and wild grain. Colors will range from pink or rose with greenish streaks.



Toll free: 877-355-8957 • Email: info@birdseyemaple.com • www.BirdsEyeMaple.com